

## Registration

Name

---

Work Address:

---

---

---

Work Phone:

---

E-mail

---

Faculty, Post Doc, Student, Other:

---

University Dept., or Organization:

---

**\*No Registration Fee\***

**Registration Deadline: Sept. 1, 2008**

---

**Return the information above to:**

James Trosko, Ph.D.

trosko@msu.edu

517-432-3100

246 Food Safety & Toxicology  
Michigan State University  
East Lansing, MI 48824

## Symposium Sponsors

Michigan State University  
College of Human Medicine



*Division of Human Genetics & Epigenetic Toxicology, Oncology,  
& Human Adult Stem Cells.*



## Symposium Organizer

**James E. Trosko, Ph.D.**

246 Food Safety and Toxicology

East Lansing, MI 48824

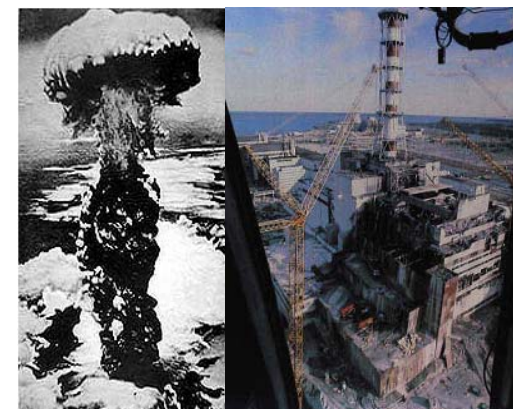
Phone: 517-432-3100

trosko@msu.edu

## Human Health Risks to Low-Level Radiation

**A Half-Day Symposium  
September 30, 2008**

12 noon to 4:30 p.m.  
162 Food Safety and Toxicology  
Michigan State University



**Presented by**

**MSU's Division of Genetics  
& Epigenetic Toxicology,  
Oncology, & Human Adult Stem Cells**

**MICHIGAN STATE  
UNIVERSITY**

## Workshop Description

The University of Nagasaki recently received a “Global Center of Excellence” (G-COE) grant from the Japanese Science Promotion Society (2007-2012).

Dr. Shunichi Yamashita has been chosen to be the principal investigator of an international consortium. Michigan State University, being one member of this consortium, has agreed to assist this G-COE. The overall goal is education related to understanding the risks to human health after exposures to low-level radiation. [[www-sdc.med.nagasaki-u.ac.jp/gcoe/index.html](http://www-sdc.med.nagasaki-u.ac.jp/gcoe/index.html).]

The G-COE’s objectives to achieve this goal include: (1) to create new research and educational strategies for training students in radiation biology; (2) to accelerate true research and educational collaborations among all members of the international consortium; and (3) to provide opportunities to invite foreign researchers and students to the University of Nagasaki for short- (a few days/2weeks) to long-term exchanges (up to two years) to conduct research.

Radiation-induced physical and mental health risks, due to low-level exposures, such as those experienced after the two atomic bomb incidences in Hiroshima and Nagasaki, the Chernobyl accident, as well as medical exposures, workplace exposures, and potential exposure from “Dirty Bomb” terrorism, will be the topic of Dr. Yamashita’s review of the G-COE project.

A panel discussion, after Dr. Yamashita’s presentation, will examine how the various disciplinary experts at MSU might assist in understanding the potential health risks for humans exposed to low-level radiation.

## Schedule of Events

**Tuesday, September 30th, 2008**

**11:30-1:30**

**Registration/Luncheon Buffet**  
Atrium: 162 Food Safety and Toxicology

**1:30-2:30**

**“Current and Future Activities:  
Nagasaki University Global Strategic Center  
Radiation Health Risk Control”**  
Shinuchi Yamashita, M.D.  
P.I., Global Center of Excellence  
University of Nagasaki

**2:30-3:00**

**Open Discussion of International Consortium**

**3:00-3:30**

**Coffee Break**

**3:30-4:30**

**Multi-Disciplinary Panel Discussion**  
Potential Cooperation between Michigan State University  
and the University of Nagasaki



## Speakers

**Shunichi Yamashita, M.D.**

P.I., Global Center of Excellence  
University of Nagasaki Medical School  
Nagasaki, Japan

**Moderator**

**James E. Trosko, Ph.D.**

Center for Integrative Toxicology, and  
Department of Pediatrics and Human  
Development, Michigan State University

## Panelists

**Reginald M. Ronningen, Ph.D.**

Senior Physicist Cyclotron Laboratory  
Michigan State University

**Paul Satoh, Ph.D.**

V.P. Research & Development  
Division HealthCare/Diagnostics  
Neogen Corporation  
Lansing, Michigan

**Edmund F. McGarrell, Ph.D.**

Co-Director MSU Initiation on Risk Values  
Department of Criminal Justice  
Michigan State University