

1

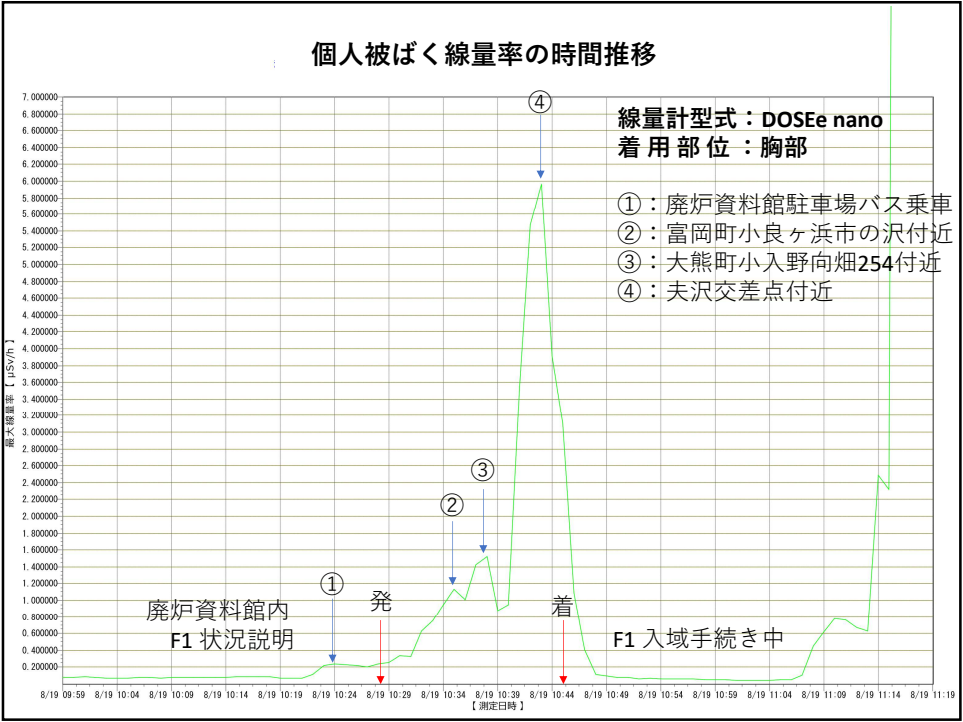
いわき・廃炉資料館間の車内線量率変化



2



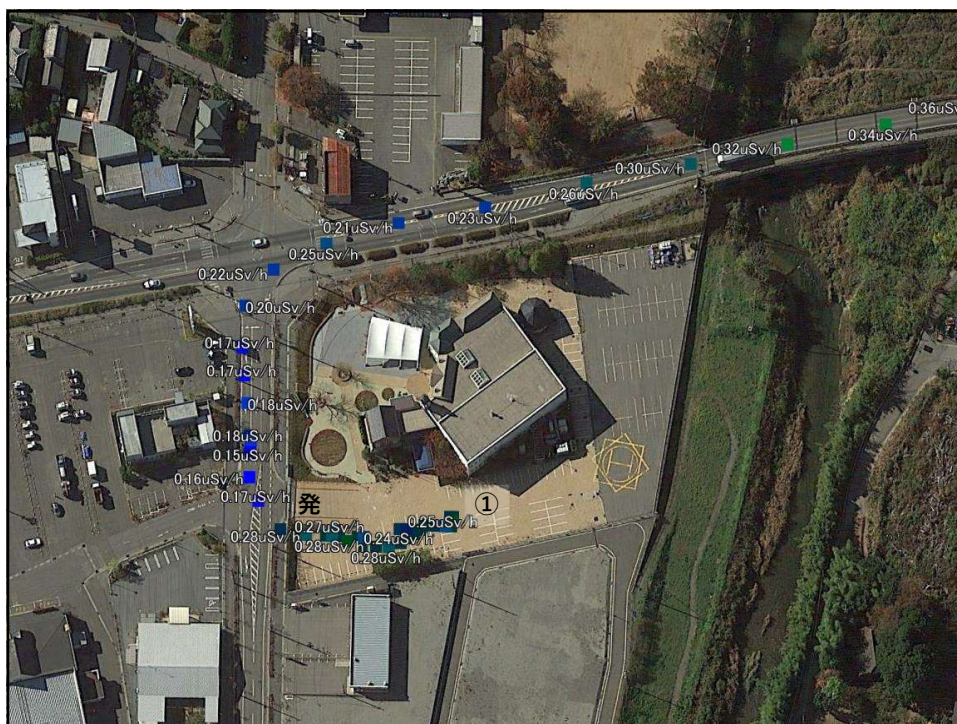
3



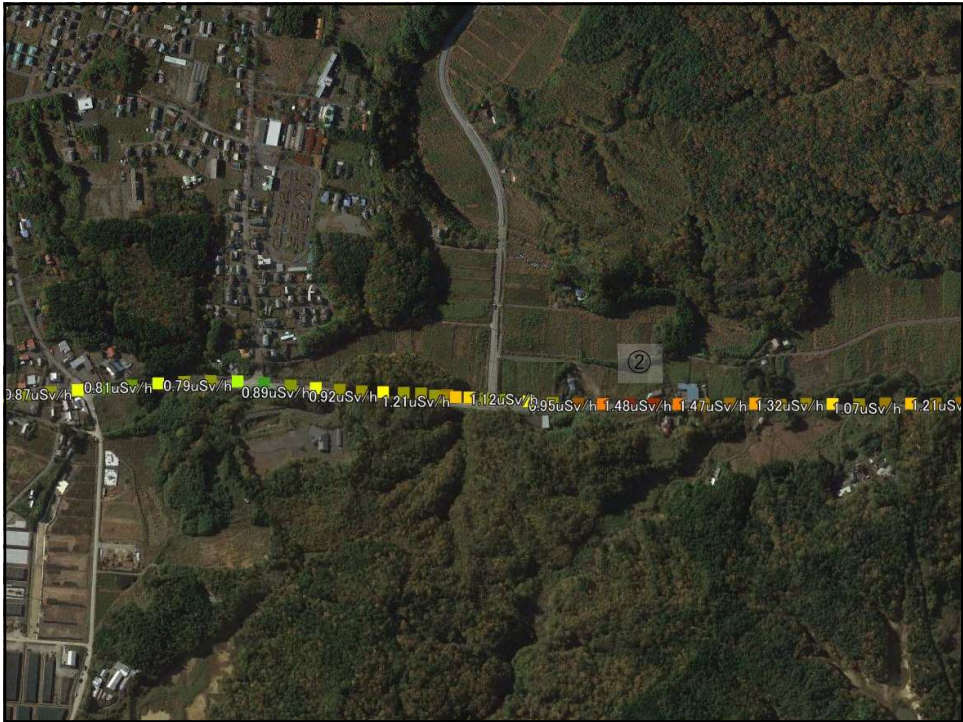
4



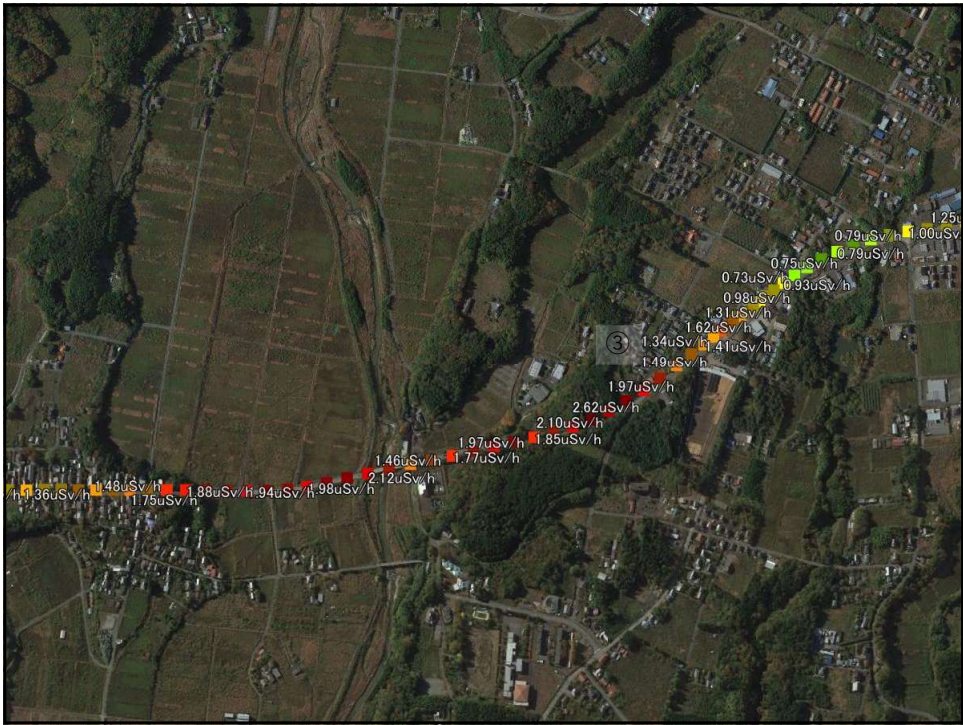
5



6



7



8

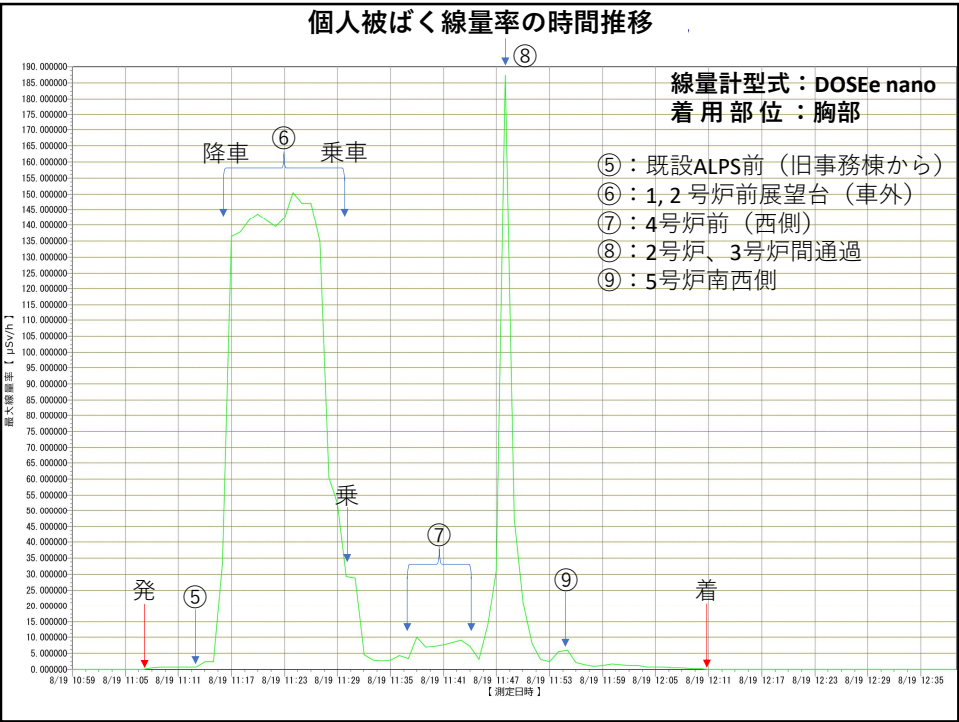


9

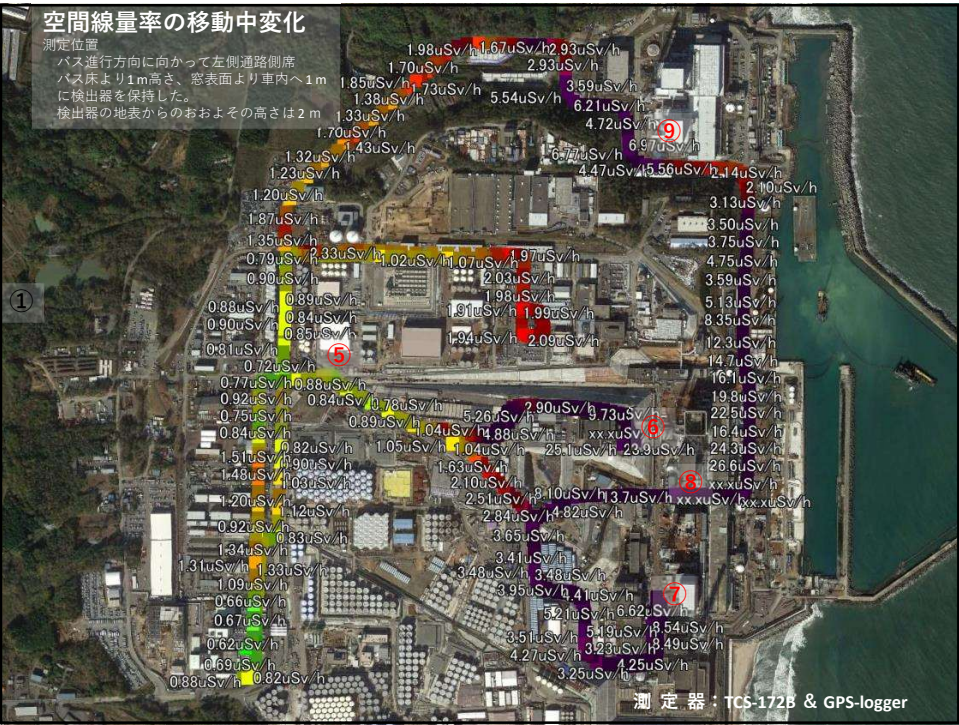


10





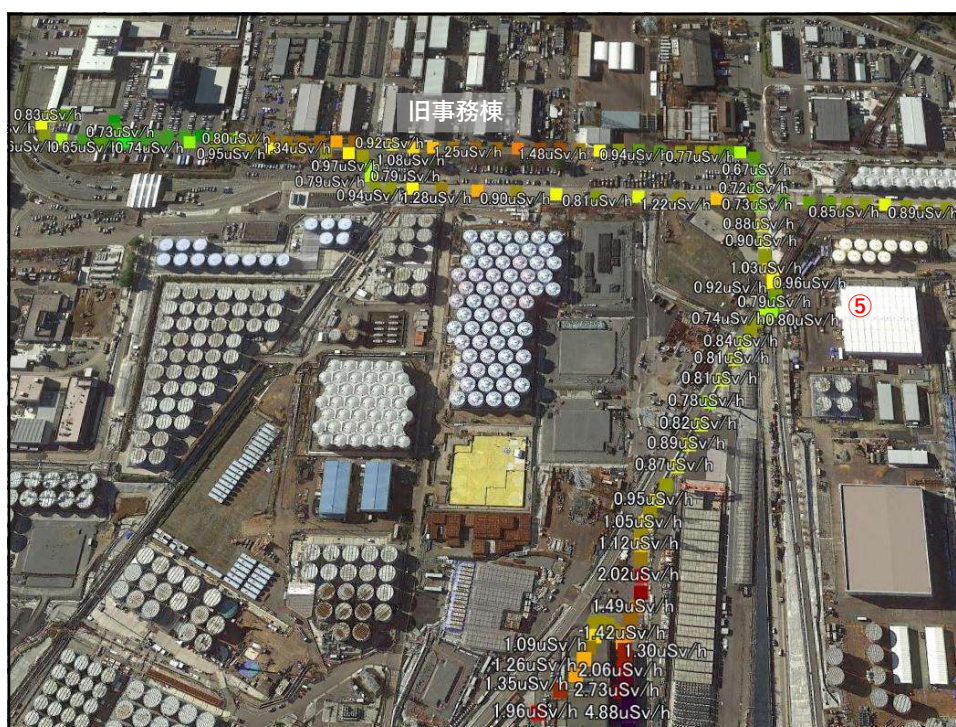
13



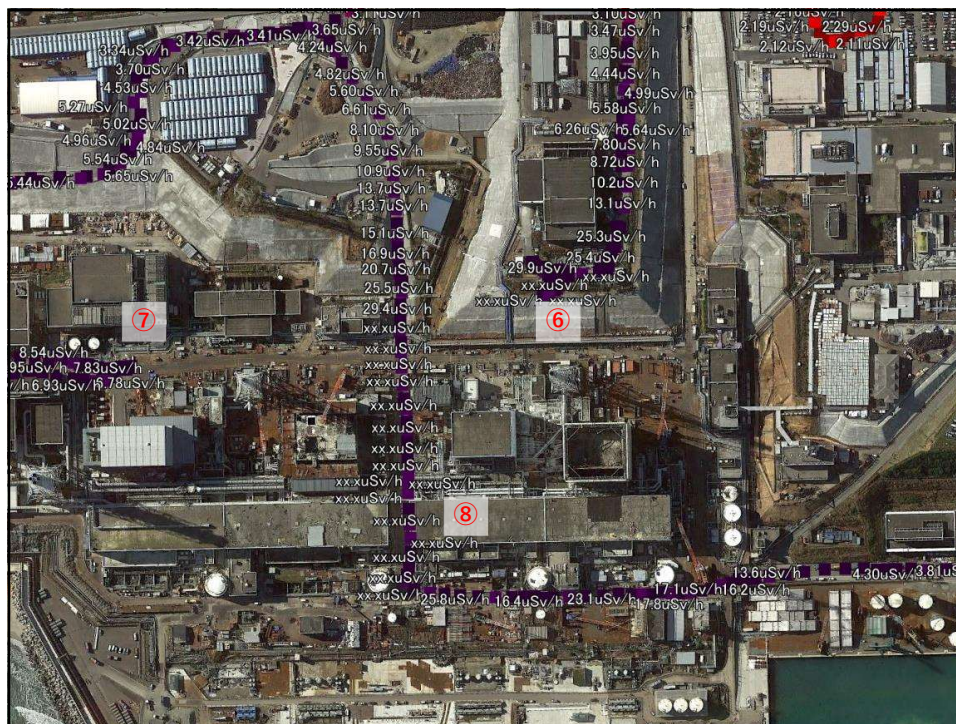
14



15



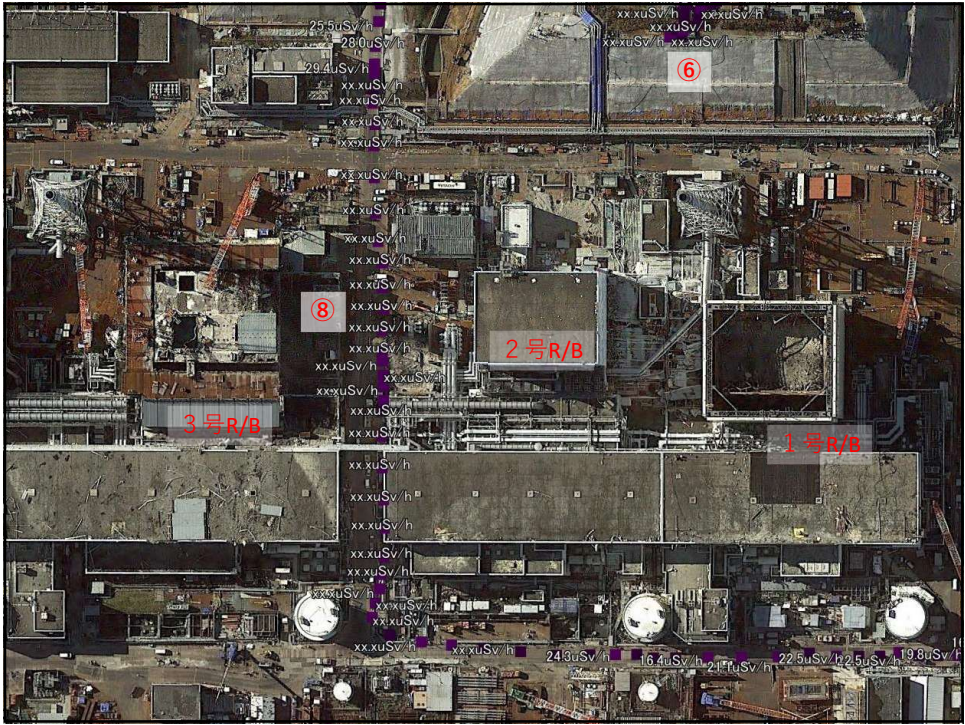
16



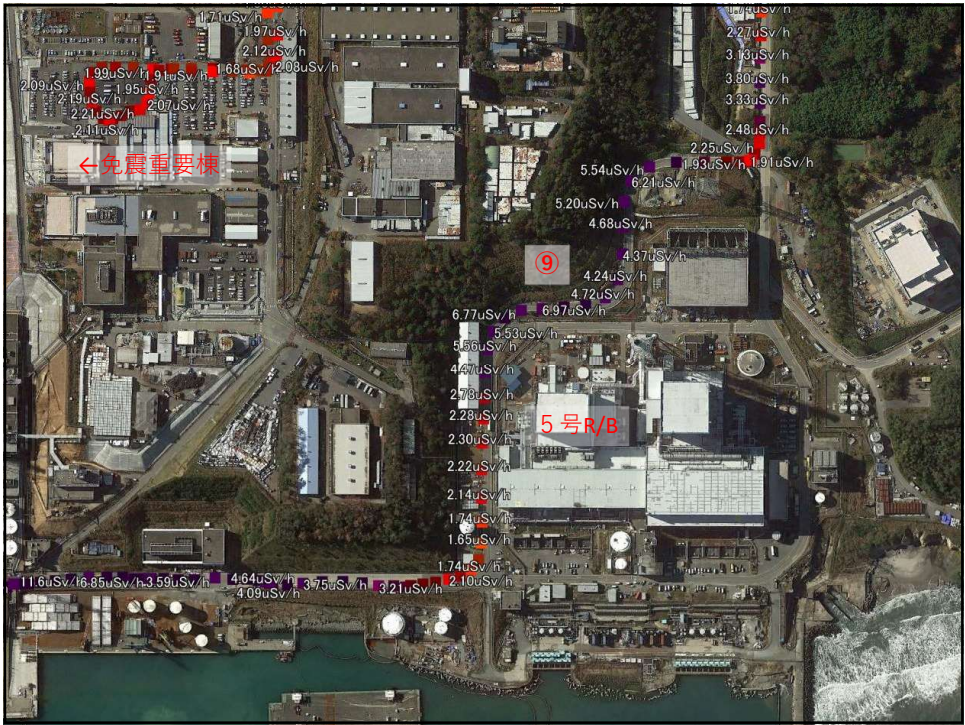
17



18



19



20

福島第1原子力発電所内での
モニタリング中
個人被ばく線量

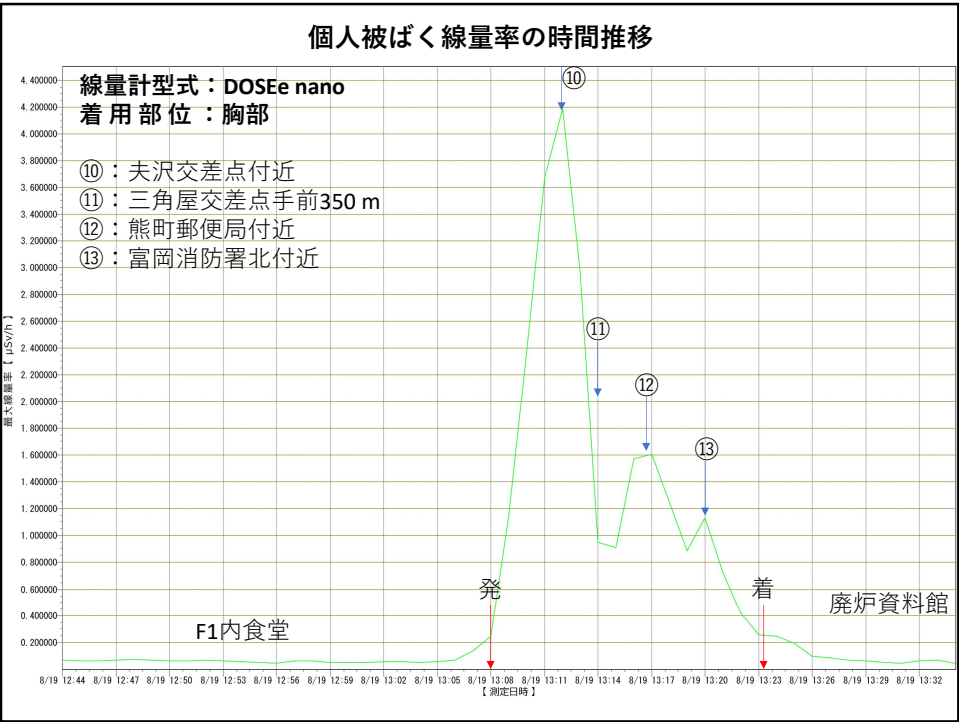
- 移動中の個人被ばく線量変化

左表を参照

11:07～12:11
個人被ばく線量積算値 0.024309 mSv
24.3 μSv

年月日時刻	被ばく線量 (mSv)	2019.08.19 11:36	0.000054
2019.08.19 11:07	0.000002	2019.08.19 11:37	0.000043
2019.08.19 11:08	0.000008	2019.08.19 11:38	0.000078
2019.08.19 11:09	0.000008	2019.08.19 11:39	0.000084
2019.08.19 11:10	0.000011	2019.08.19 11:40	0.000083
2019.08.19 11:11	0.000008	2019.08.19 11:41	0.000093
2019.08.19 11:12	0.000009	2019.08.19 11:42	0.000098
2019.08.19 11:13	0.000007	2019.08.19 11:43	0.000111
2019.08.19 11:14	0.000024	2019.08.19 11:44	0.000062
2019.08.19 11:15	0.000028	2019.08.19 11:45	0.000035
2019.08.19 11:16	0.000171	2019.08.19 11:46	0.000059
2019.08.19 11:17	0.000922	2019.08.19 11:47	0.000324
2019.08.19 11:18	0.001852	2019.08.19 11:48	0.001045
2019.08.19 11:19	0.00175	2019.08.19 11:49	0.000402
2019.08.19 11:20	0.001931	2019.08.19 11:50	0.000181
2019.08.19 11:21	0.00196	2019.08.19 11:51	0.000056
2019.08.19 11:22	0.001959	2019.08.19 11:52	0.000038
2019.08.19 11:23	0.001999	2019.08.19 11:53	0.000028
2019.08.19 11:24	0.00201	2019.08.19 11:54	0.000034
2019.08.19 11:25	0.001774	2019.08.19 11:55	0.000044
2019.08.19 11:26	0.001987	2019.08.19 11:56	0.000023
2019.08.19 11:27	0.000798	2019.08.19 11:57	0.000015
2019.08.19 11:28	0.000661	2019.08.19 11:58	0.000014
2019.08.19 11:29	0.000607	2019.08.19 11:59	0.000013
2019.08.19 11:30	0.000355	2019.08.19 12:00	0.00002
2019.08.19 11:31	0.000212	2019.08.19 12:01	0.000017
2019.08.19 11:32	0.000044	2019.08.19 12:02	0.000016
2019.08.19 11:33	0.000029	2019.08.19 12:03	0.000012
2019.08.19 11:34	0.000026	2019.08.19 12:04	0.000009
2019.08.19 11:35	0.000036	2019.08.19 12:05	0.00001
2019.08.19 11:36	0.000054	2019.08.19 12:06	0.000006
2019.08.19 11:37	0.000043	2019.08.19 12:07	0.000008
2019.08.19 11:38	0.000078	2019.08.19 12:08	0.000003
2019.08.19 11:39	0.000084	2019.08.19 12:09	0.000001
2019.08.19 11:40	0.000083	2019.08.19 12:10	0.000002
		2019.08.19 12:11	0

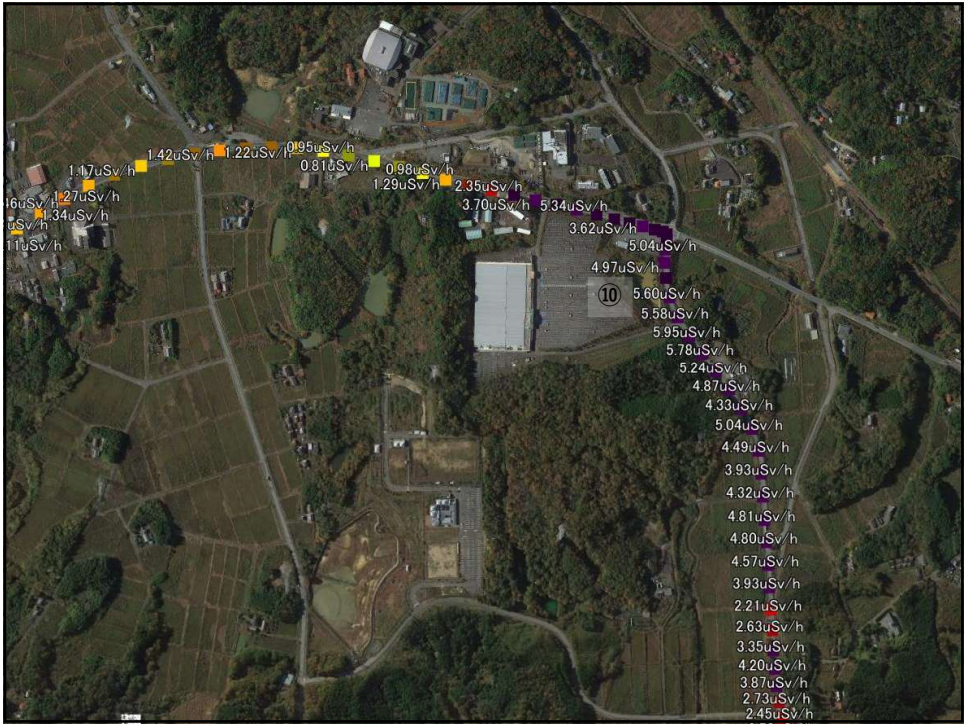




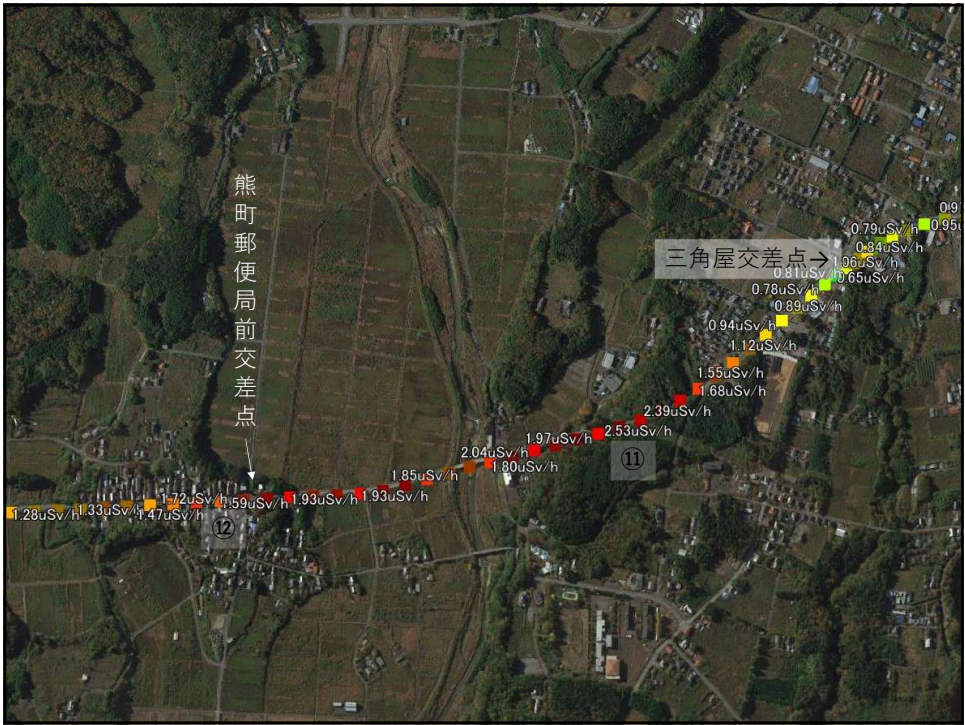
23



24



25



26



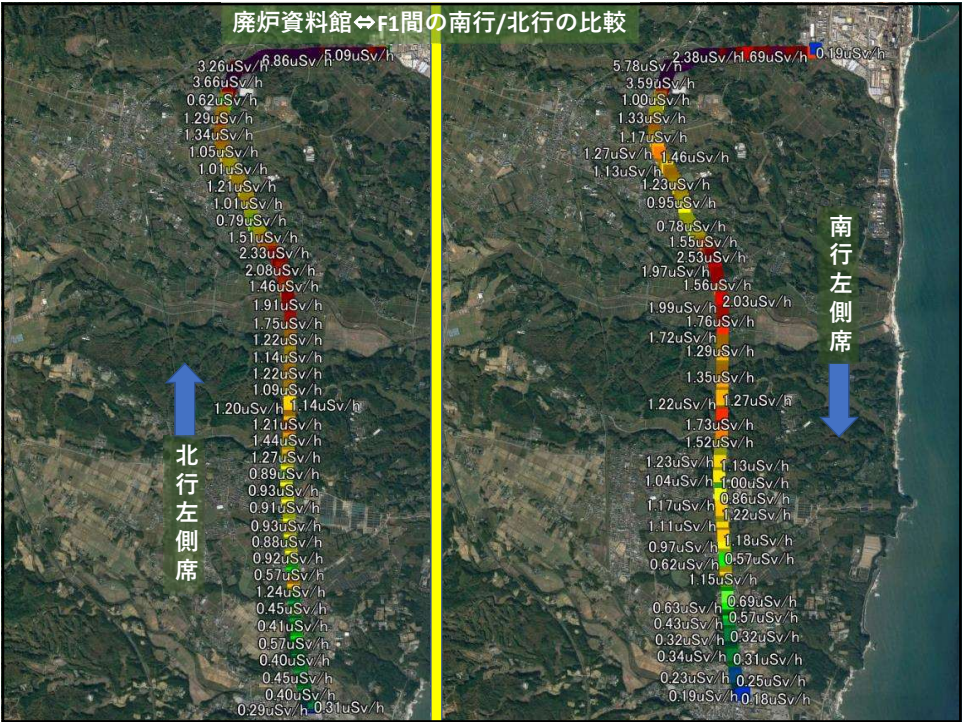
27

福島第1原子力発電所から
東京電力廃炉資料館

- 移動中の個人被ばく線量変化
左表を参照
- 13:08～13:24
個人被ばく線量積算値 0.000260 mSv
 0.260 μSv

年月日時刻	被ばく線量(mSv)
2019.08.19 13:09	0.000013
2019.08.19 13:10	0.000029
2019.08.19 13:11	0.000036
2019.08.19 13:12	0.000049
2019.08.19 13:13	0.000017
2019.08.19 13:14	0.000011
2019.08.19 13:15	0.000013
2019.08.19 13:16	0.000002
2019.08.19 13:17	0.000019
2019.08.19 13:18	0.000015
2019.08.19 13:19	0.000011
2019.08.19 13:20	0.000013
2019.08.19 13:21	0.000004
2019.08.19 13:22	0.000004
2019.08.19 13:23	0.000003
2019.08.19 13:24	0.000003

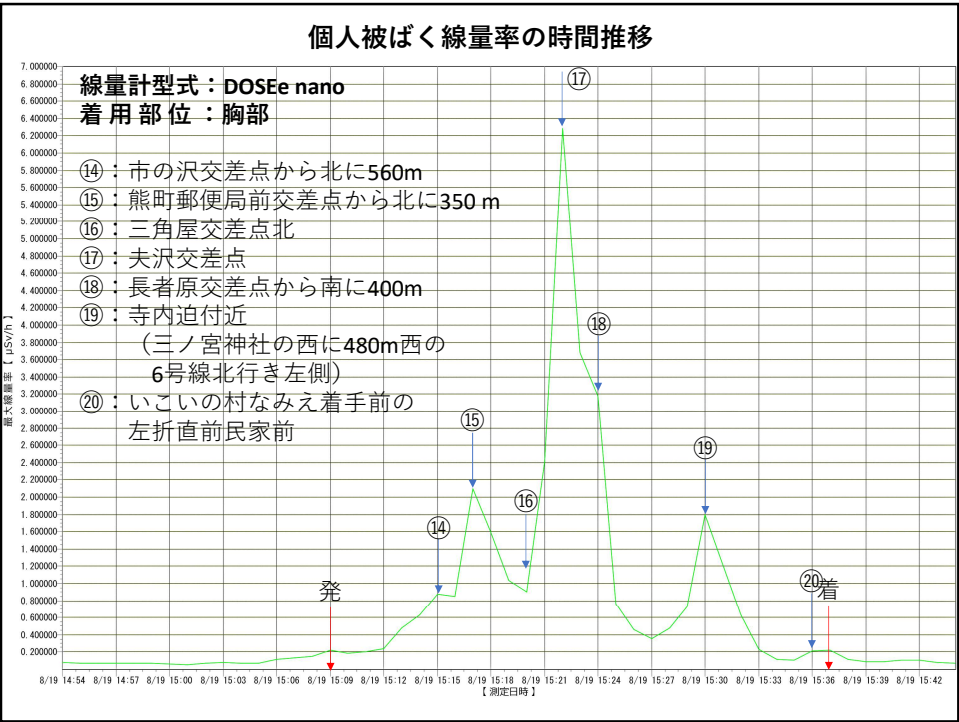
28



29



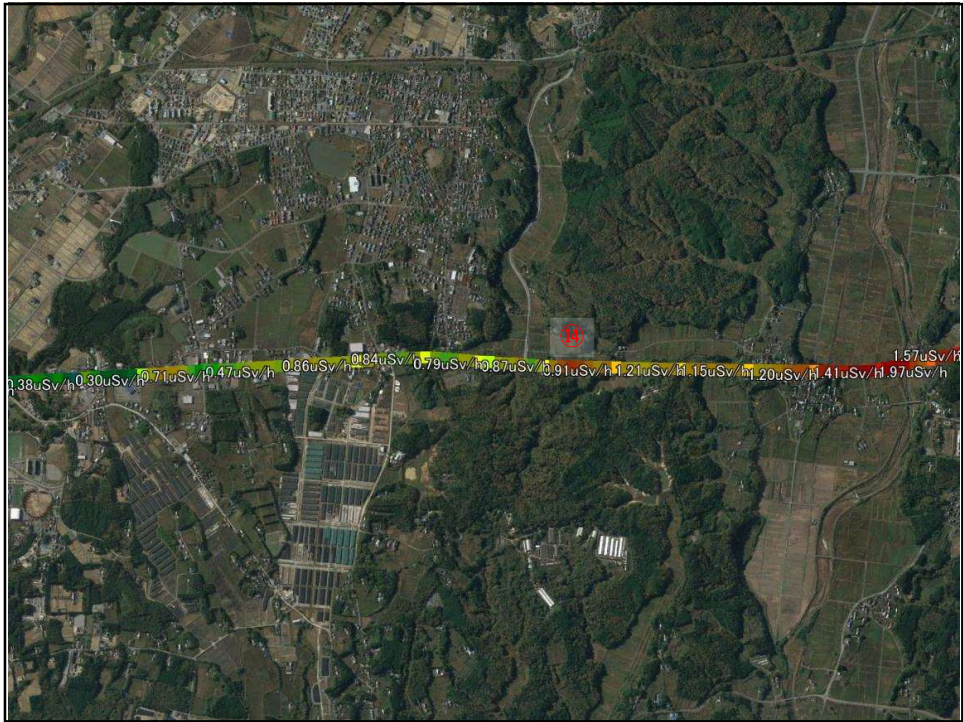
30



31



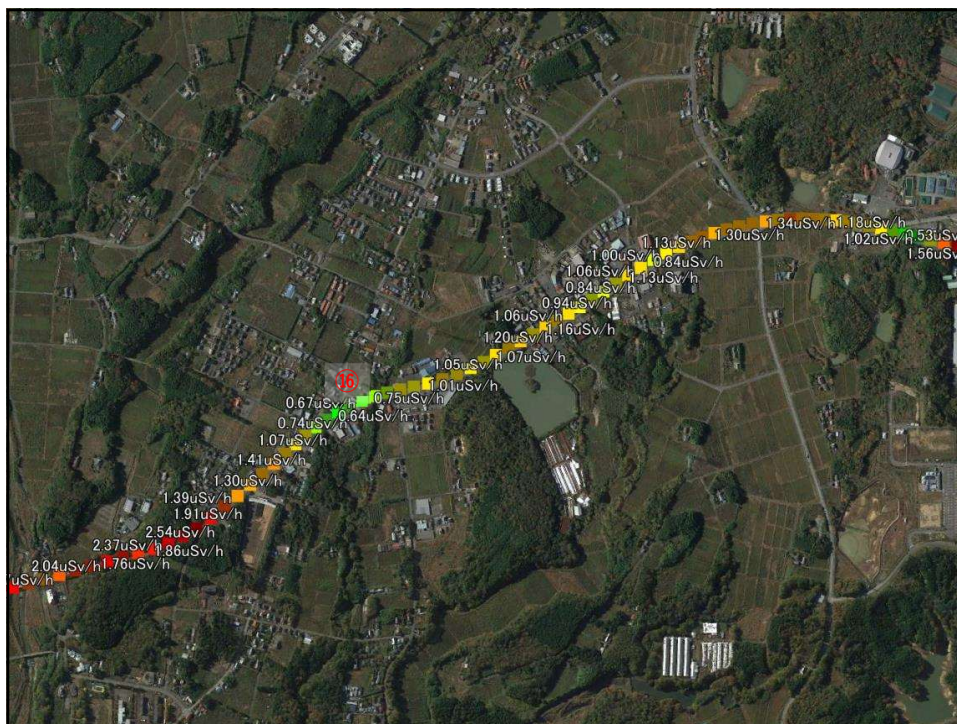
32



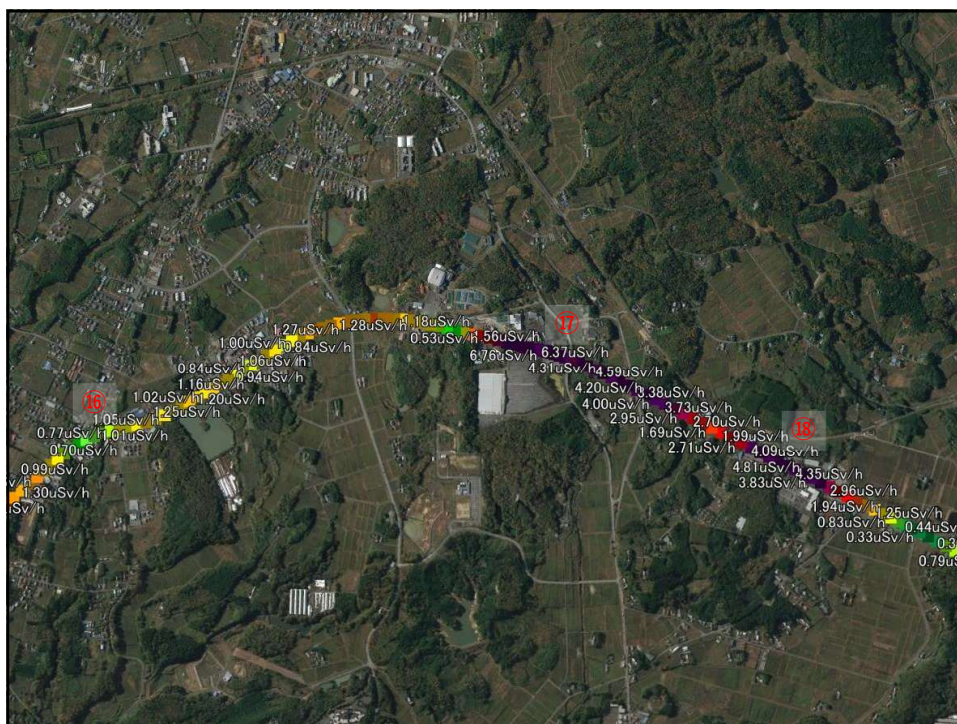
33



34



35



36



37



38

• 移動中の個人被ばく線量変化

左表を参照

15:09～15:37

個人被ばく線量積算値0.000322 mSv

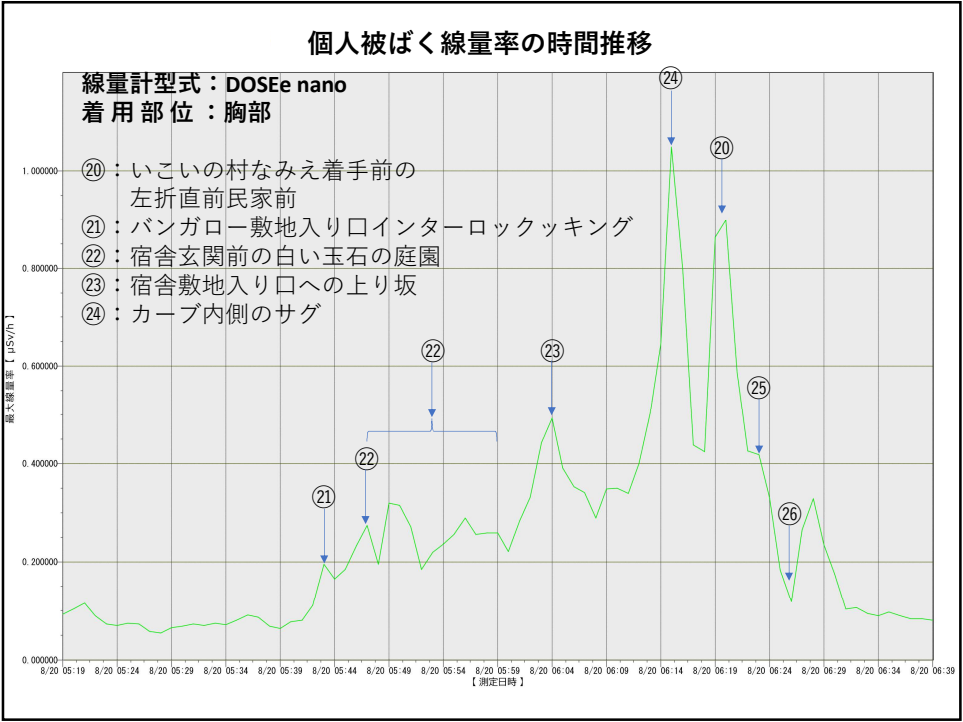
0.322 μSv

年月日時刻	被ばく線量(mSv)
2019.08.19 15:09	0.000003
2019.08.19 15:10	0.000002
2019.08.19 15:11	0.000003
2019.08.19 15:12	0.000003
2019.08.19 15:13	0.000006
2019.08.19 15:14	0.000009
2019.08.19 15:15	0.00001
2019.08.19 15:16	0.000012
2019.08.19 15:17	0.000021
2019.08.19 15:18	0.000019
2019.08.19 15:19	0.00001
2019.08.19 15:20	0.000012
2019.08.19 15:21	0.00002
2019.08.19 15:22	0.000063
2019.08.19 15:23	0.000042
2019.08.19 15:24	0.000015
2019.08.19 15:25	0.000006
2019.08.19 15:26	0.000006
2019.08.19 15:27	0.000002
2019.08.19 15:28	0.000006
2019.08.19 15:29	0.000011
2019.08.19 15:30	0.00002
2019.08.19 15:31	0.000009
2019.08.19 15:32	0.000003
2019.08.19 15:33	0.000001
2019.08.19 15:34	0.000002
2019.08.19 15:35	0.000001
2019.08.19 15:36	0.000003
2019.08.19 15:37	0.000002

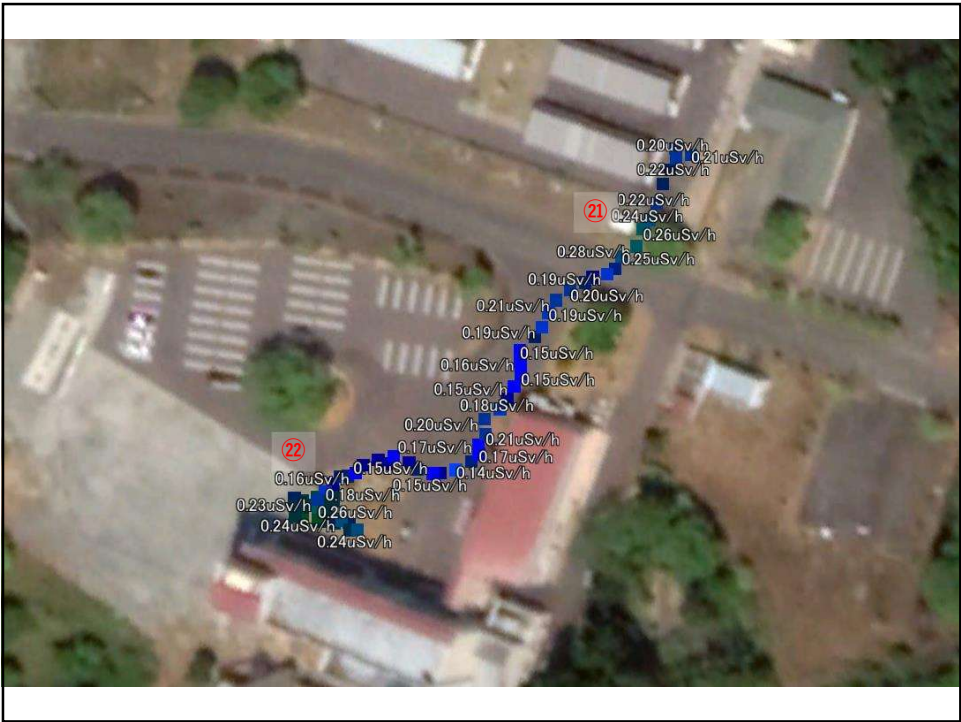




41



42



43



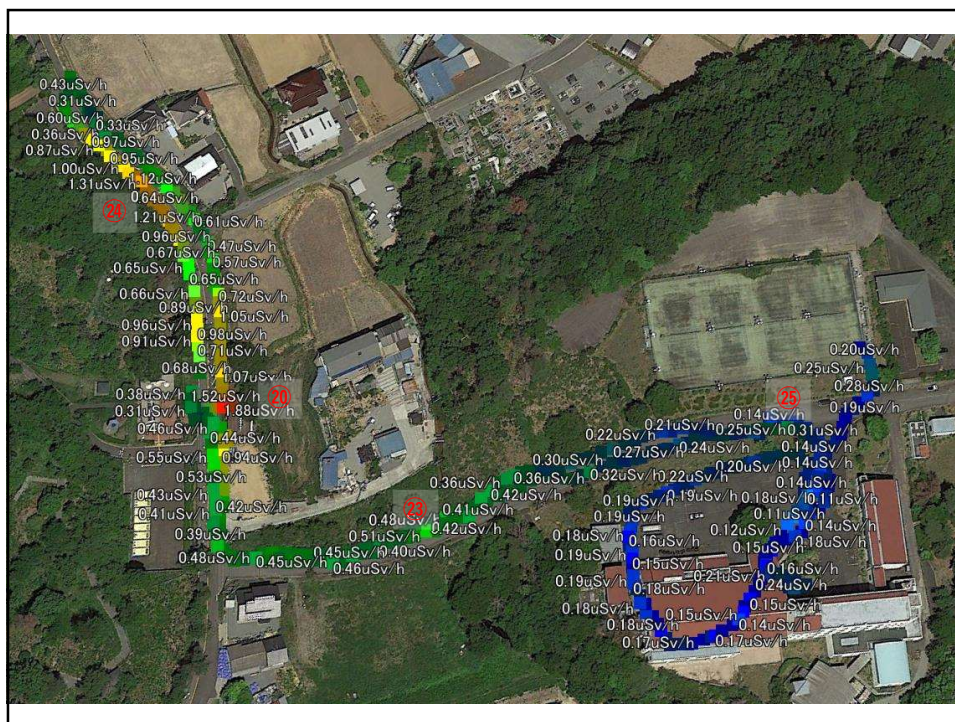
44



45



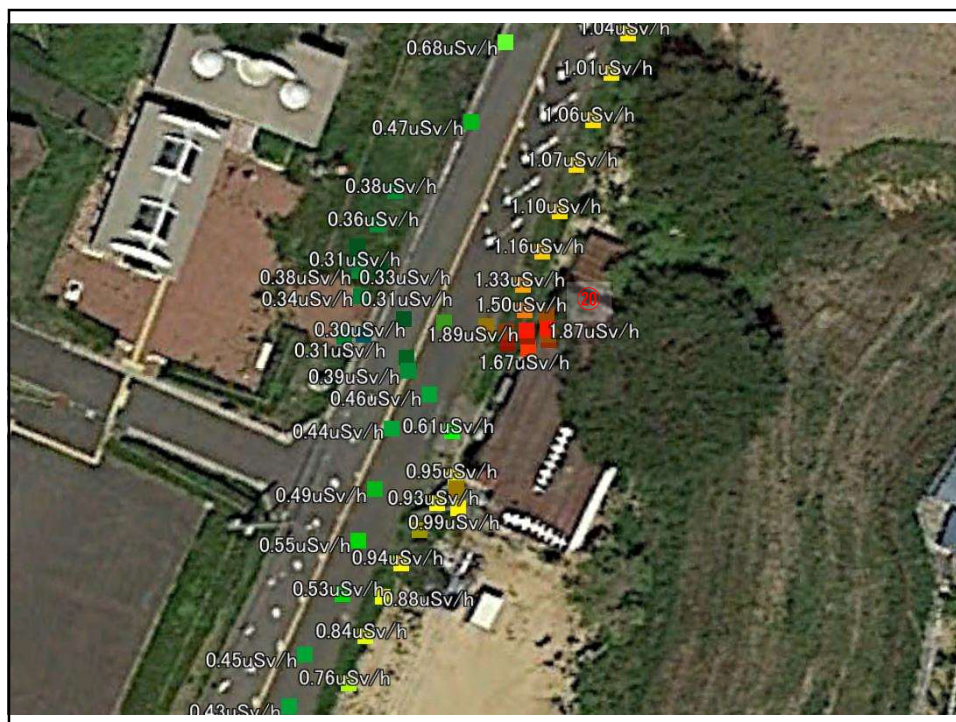
46



47



48



49



50

• 移動中の個人被ばく線量変化

左表を参照

5:40～6:29

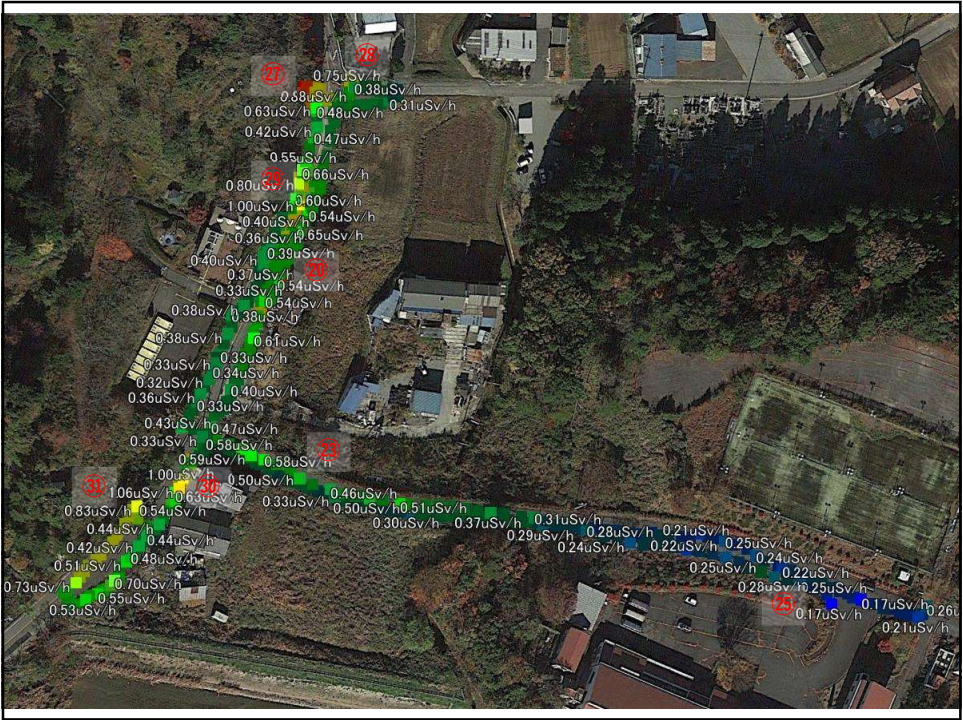
個人被ばく線量積算値

0.000214 mSv

0.214 μSv

年月日時刻	被ばく線量(mSv)
2019.08.20 05:40	0.000001
2019.08.20 05:41	0.000001
2019.08.20 05:42	0.000003
2019.08.20 05:43	0.000003
2019.08.20 05:44	0.000002
2019.08.20 05:45	0.000003
2019.08.20 05:46	0.000003
2019.08.20 05:47	0.000003
2019.08.20 05:48	0.000003
2019.08.20 05:49	0.000004
2019.08.20 05:50	0.000003
2019.08.20 05:51	0.000004
2019.08.20 05:52	0.000002
2019.08.20 05:53	0.000003
2019.08.20 05:54	0.000003
2019.08.20 05:55	0.000003
2019.08.20 05:56	0.000004
2019.08.20 05:57	0.000003
2019.08.20 05:58	0.000003
2019.08.20 05:59	0.000003
2019.08.20 06:00	0.000003
2019.08.20 06:01	0.000004
2019.08.20 06:02	0.000005
2019.08.20 06:03	0.000006
2019.08.20 06:04	0.000006
2019.08.20 06:05	0.000004
2019.08.20 06:06	0.000005
2019.08.20 06:07	0.000004
2019.08.20 06:08	0.000004
2019.08.20 06:09	0.000005
2019.08.20 06:10	0.000004
2019.08.20 06:11	0.000005
2019.08.20 06:12	0.000006
2019.08.20 06:13	0.000006
2019.08.20 06:14	0.000009
2019.08.20 06:15	0.000013
2019.08.20 06:16	0.000006
2019.08.20 06:17	0.000005
2019.08.20 06:18	0.000006
2019.08.20 06:19	0.000012
2019.08.20 06:20	0.000008
2019.08.20 06:21	0.000007
2019.08.20 06:22	0.000005
2019.08.20 06:23	0.000004
2019.08.20 06:24	0.000003
2019.08.20 06:25	0.000001
2019.08.20 06:26	0.000002
2019.08.20 06:27	0.000004
2019.08.20 06:28	0.000004
2019.08.20 06:29	0.000002





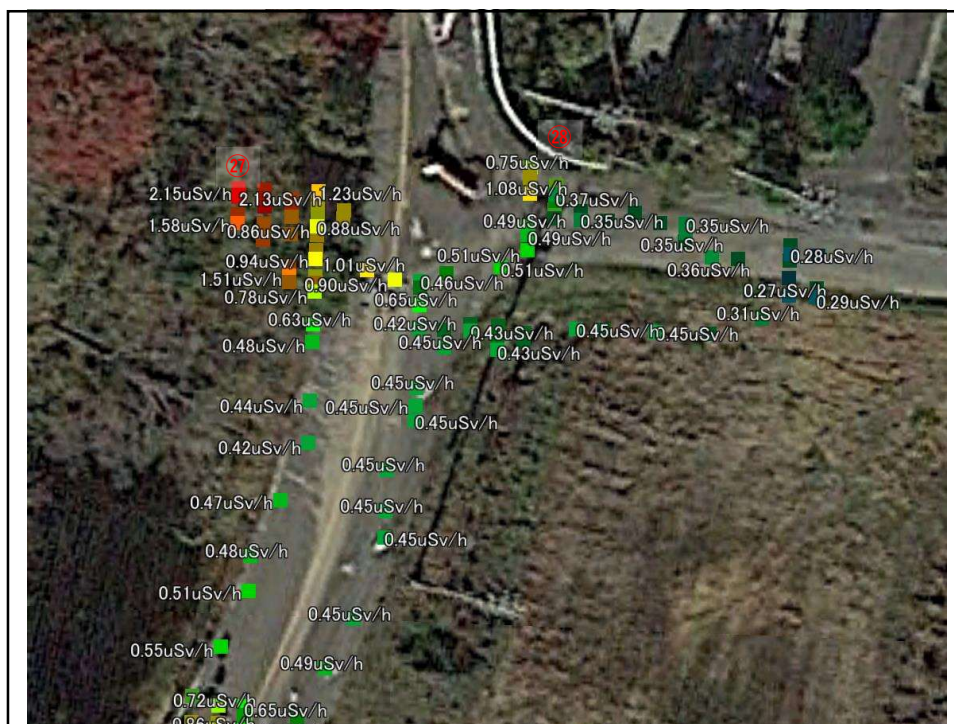
53



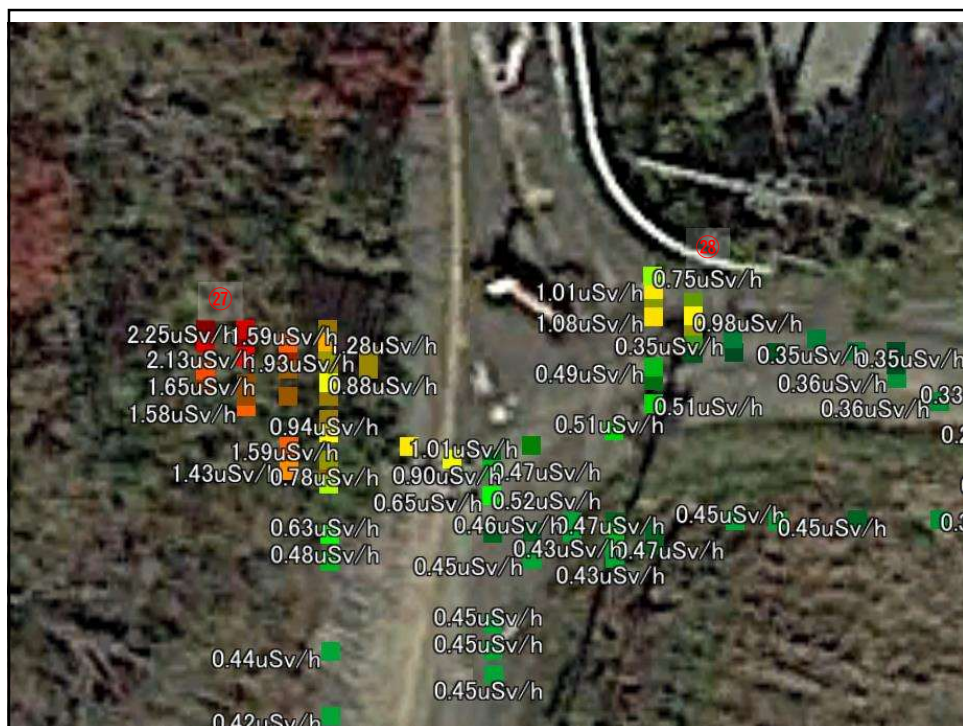
54



55



56



57



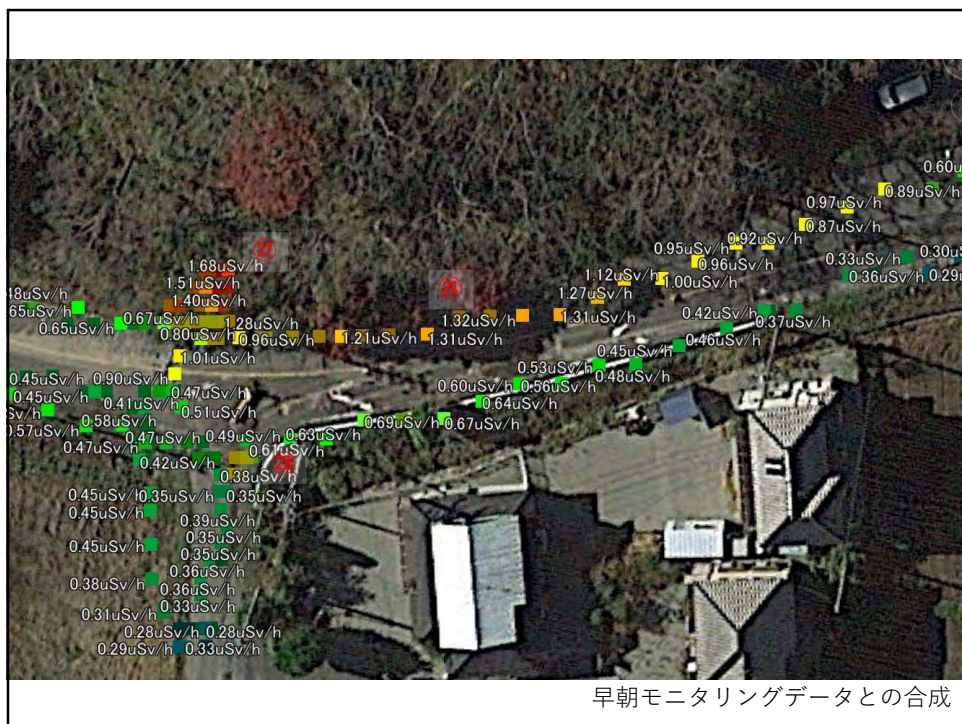
58



59



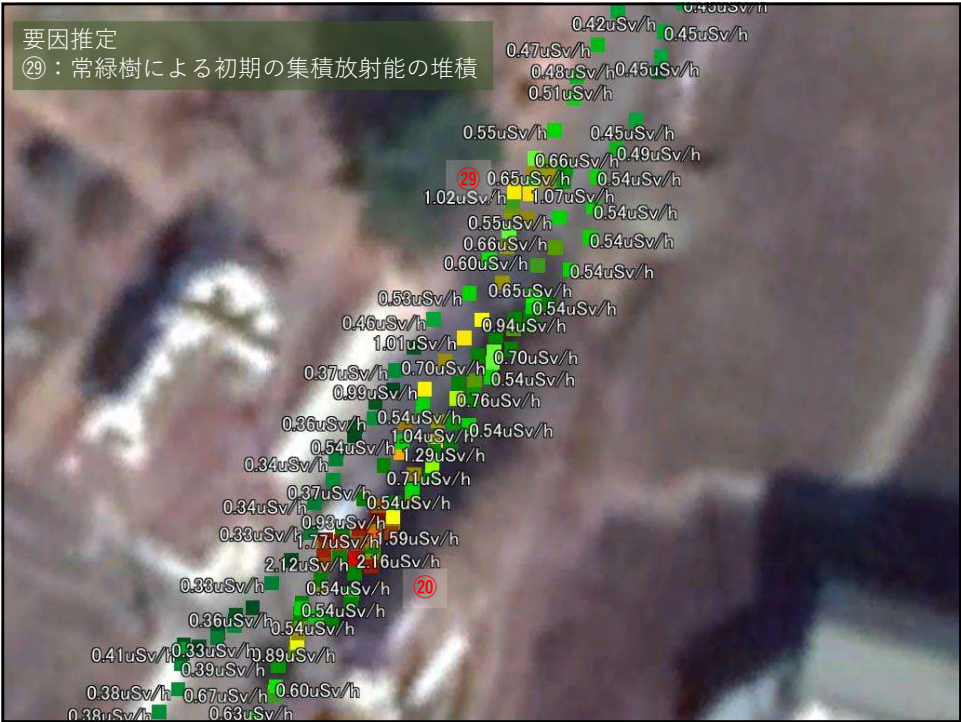
60



61



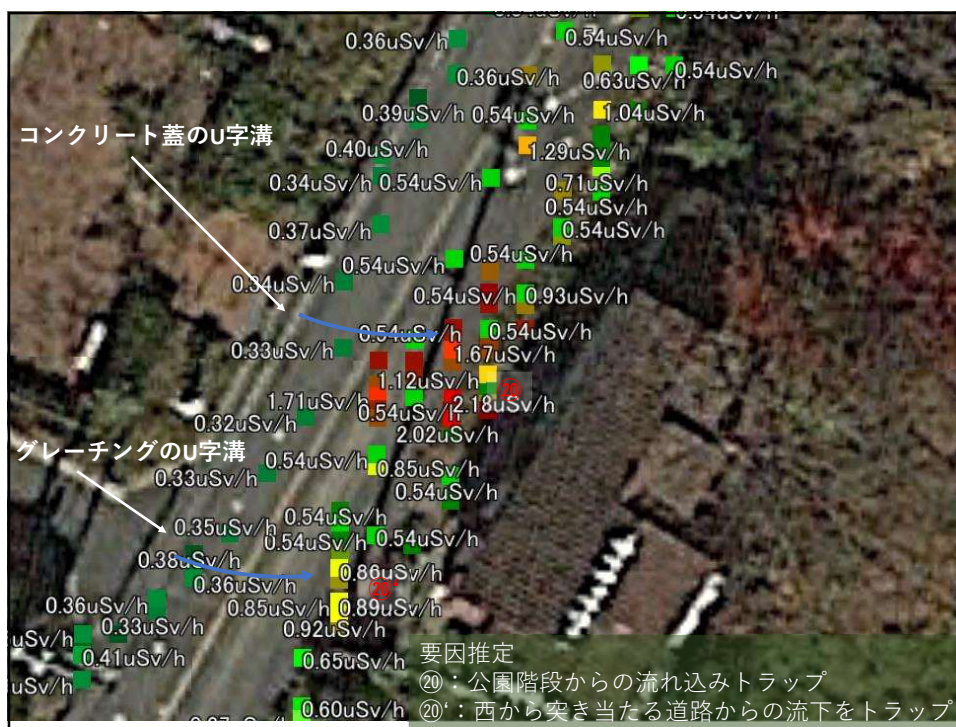
62



63



64



65



66



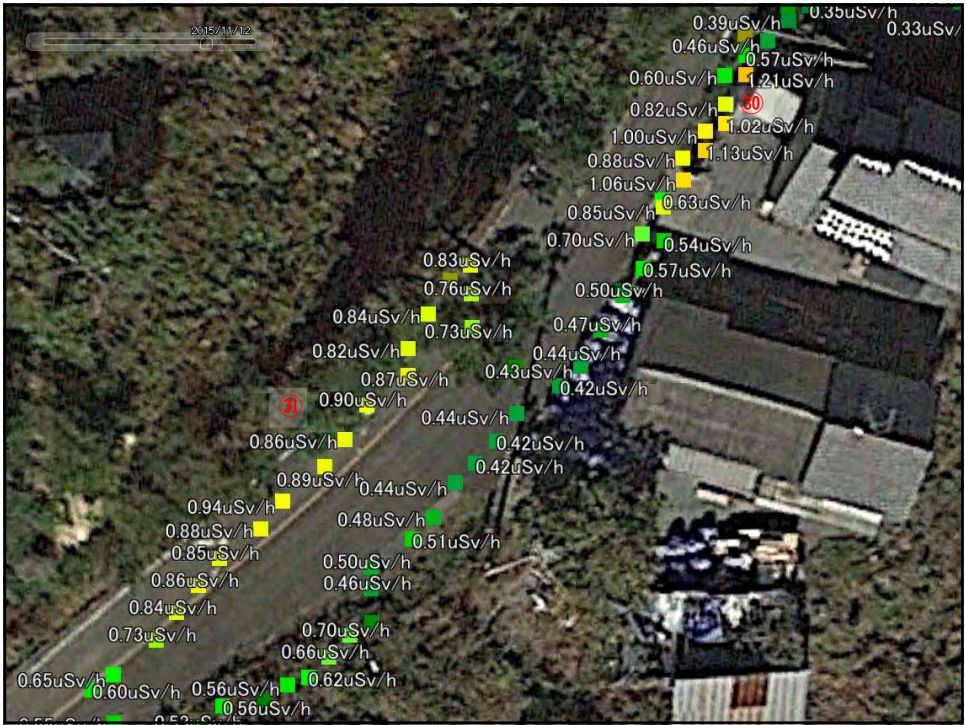
67



68



69



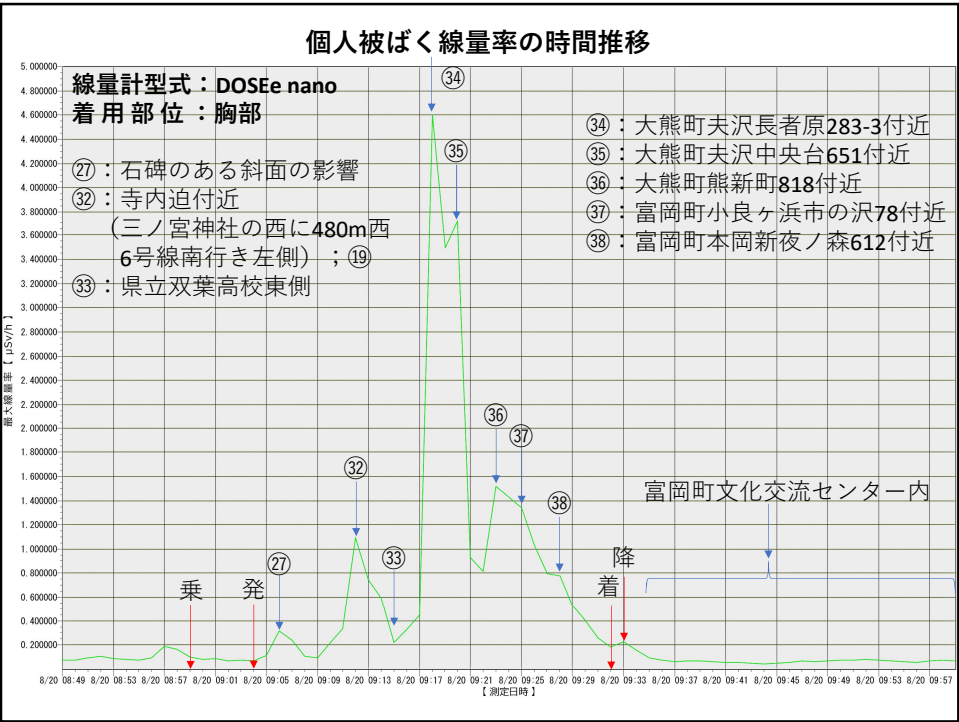
70



71



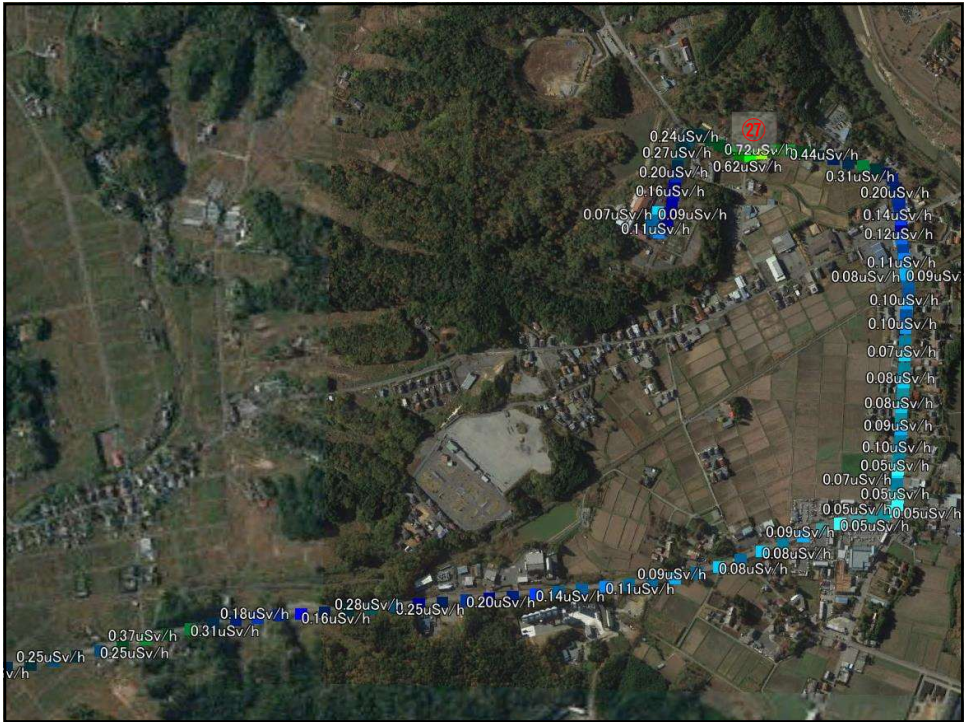
72



73



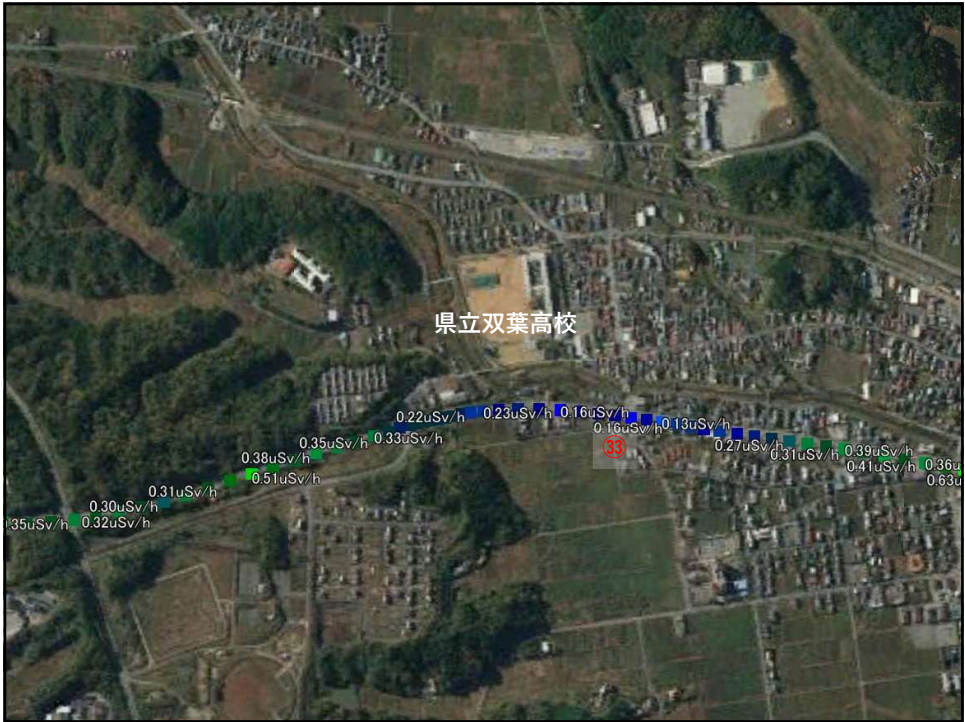
74



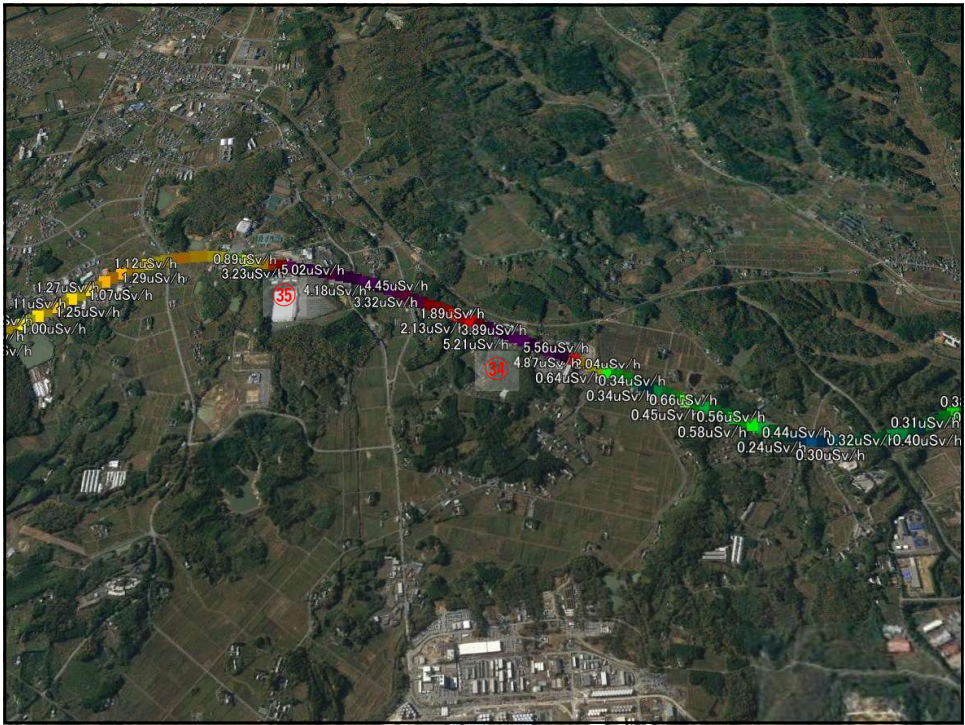
75



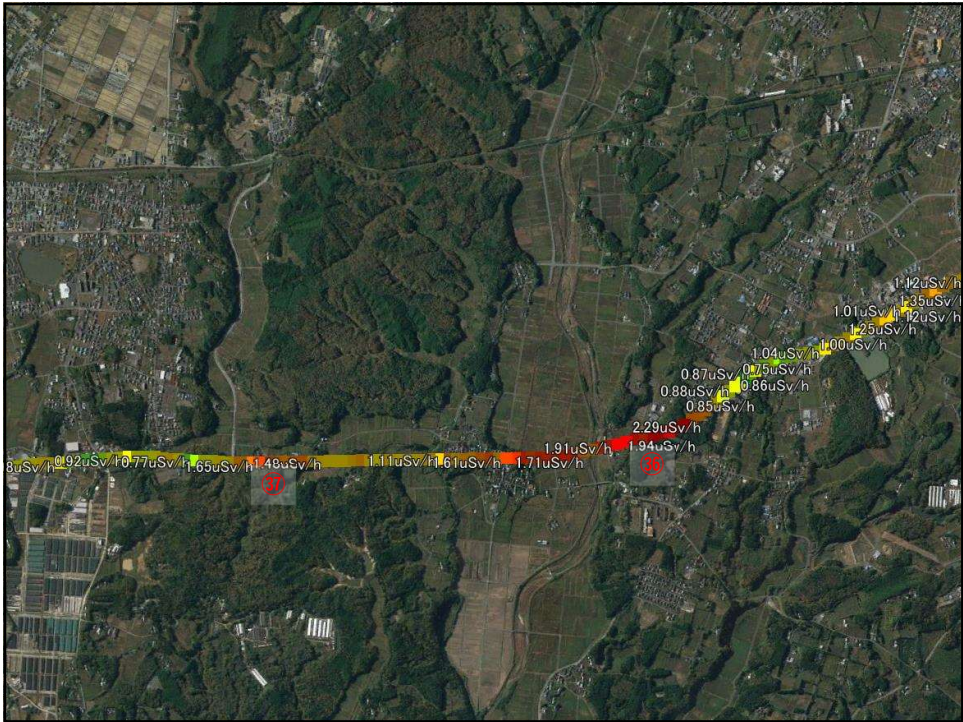
76



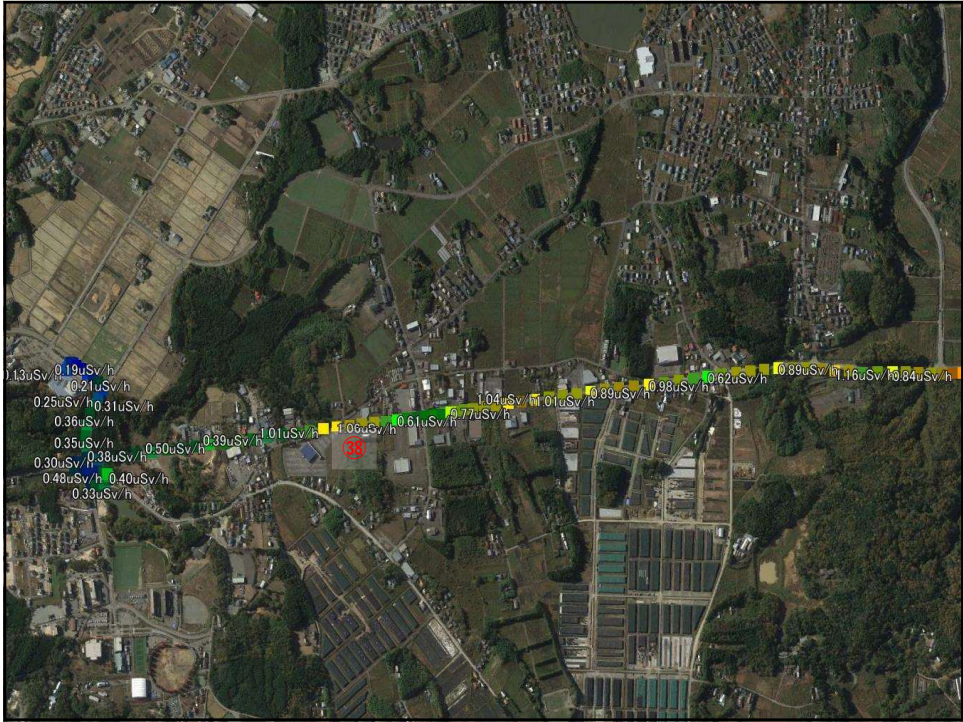
77



78



79



80

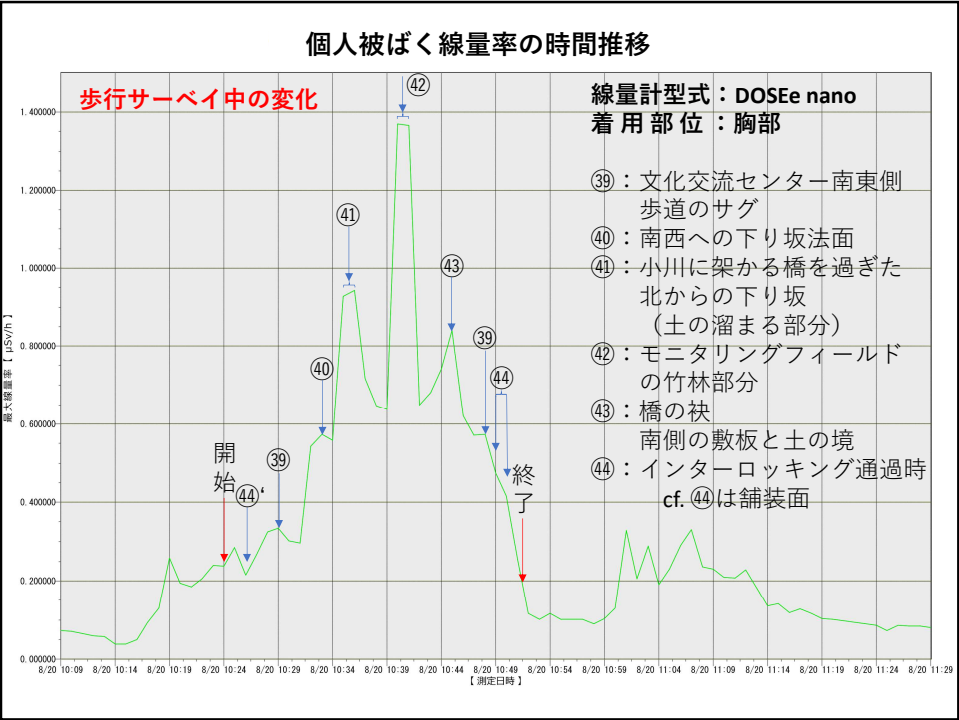
		年月日時刻	被ばく線量(mSv)
		2019.08.20 09:04	0.000001
		2019.08.20 09:05	0.000003
		2019.08.20 09:06	0.000004
		2019.08.20 09:07	0.000001
		2019.08.20 09:08	0.000001
		2019.08.20 09:09	0.000002
		2019.08.20 09:10	0.000003
		2019.08.20 09:11	0.000004
		2019.08.20 09:12	0.000016
		2019.08.20 09:13	0.000008
		2019.08.20 09:14	0.000004
		2019.08.20 09:15	0.000002
		2019.08.20 09:16	0.000005
		2019.08.20 09:17	0.000006
		2019.08.20 09:18	0.000031
		2019.08.20 09:19	0.000038
		2019.08.20 09:20	0.000022
		2019.08.20 09:21	0.000012
		2019.08.20 09:22	0.000011
		2019.08.20 09:23	0.000022
		2019.08.20 09:24	0.000014
		2019.08.20 09:25	0.000017
		2019.08.20 09:26	0.00001
		2019.08.20 09:27	0.000011
		2019.08.20 09:28	0.000009
		2019.08.20 09:29	0.000004
		2019.08.20 09:30	0.000003
		2019.08.20 09:31	0.000003
		2019.08.20 09:32	0.000002

<ul style="list-style-type: none"> 移動中の個人被ばく線量変化 		左表を参照
9:04～9:32		
個人被ばく線量積算値	0.000269 mSv	
	0.269 μSv	

81



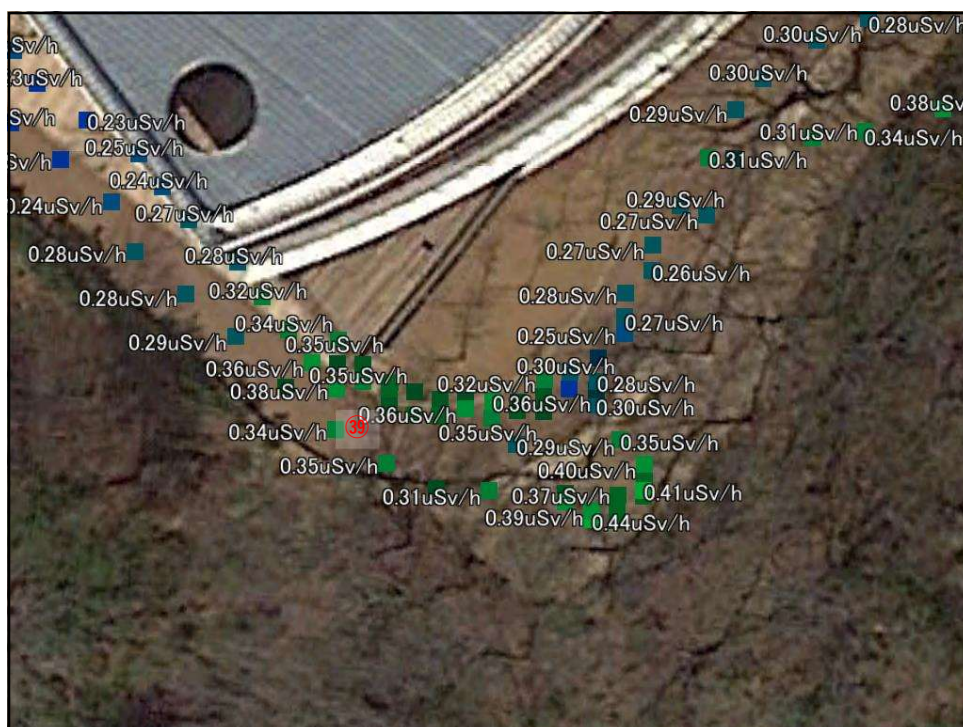
82



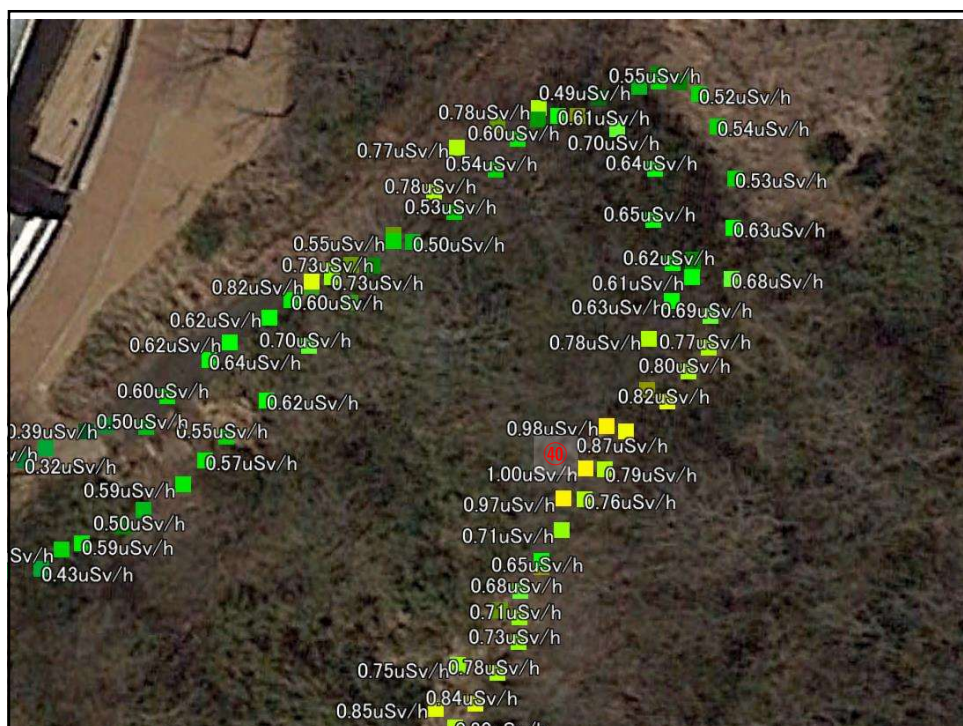
83



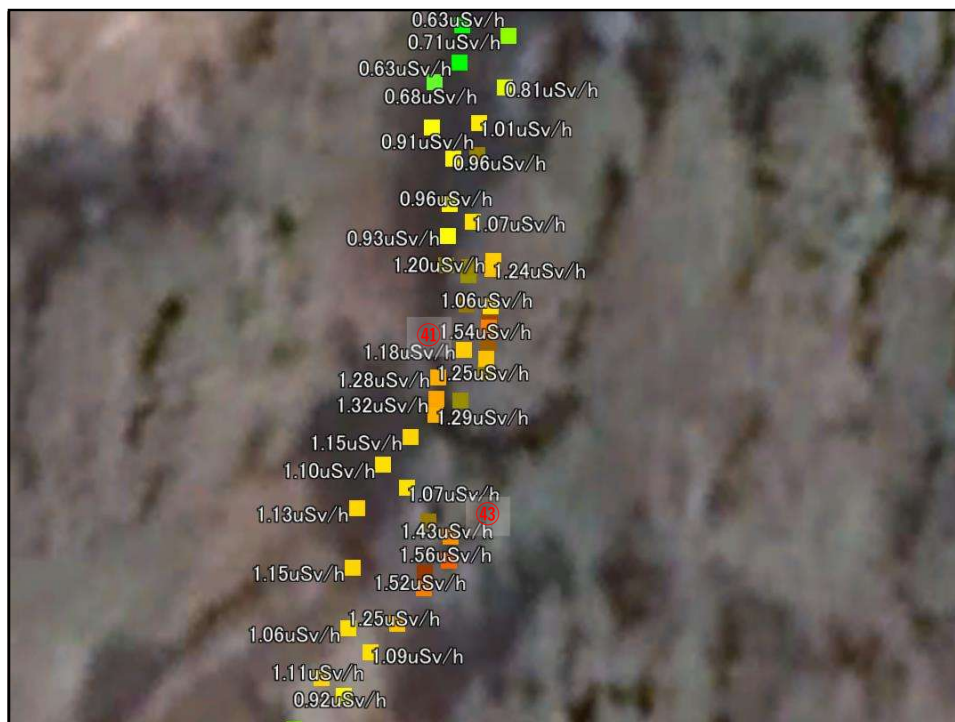
84



85



86



87



88



89

		年月日時刻	被ばく線量(mSv)
		2019.08.20 10:25	0.000004
		2019.08.20 10:26	0.000001
		2019.08.20 10:27	0.000004
		2019.08.20 10:28	0.000004
		2019.08.20 10:29	0.000005
		2019.08.20 10:30	0.000003
		2019.08.20 10:31	0.000004
		2019.08.20 10:32	0.000008
		2019.08.20 10:33	0.000007
		2019.08.20 10:34	0.000008
		2019.08.20 10:35	0.000013
		2019.08.20 10:36	0.000011
		2019.08.20 10:37	0.00001
		2019.08.20 10:38	0.000009
		2019.08.20 10:39	0.000008
		2019.08.20 10:40	0.000019
		2019.08.20 10:41	0.00001
		2019.08.20 10:42	0.000009
		2019.08.20 10:43	0.000009
		2019.08.20 10:44	0.00001
		2019.08.20 10:45	0.00001
		2019.08.20 10:46	0.000008
		2019.08.20 10:47	0.000007
		2019.08.20 10:48	0.000006
		2019.08.20 10:49	0.000006
		2019.08.20 10:50	0.000004
		2019.08.20 10:51	0.000002

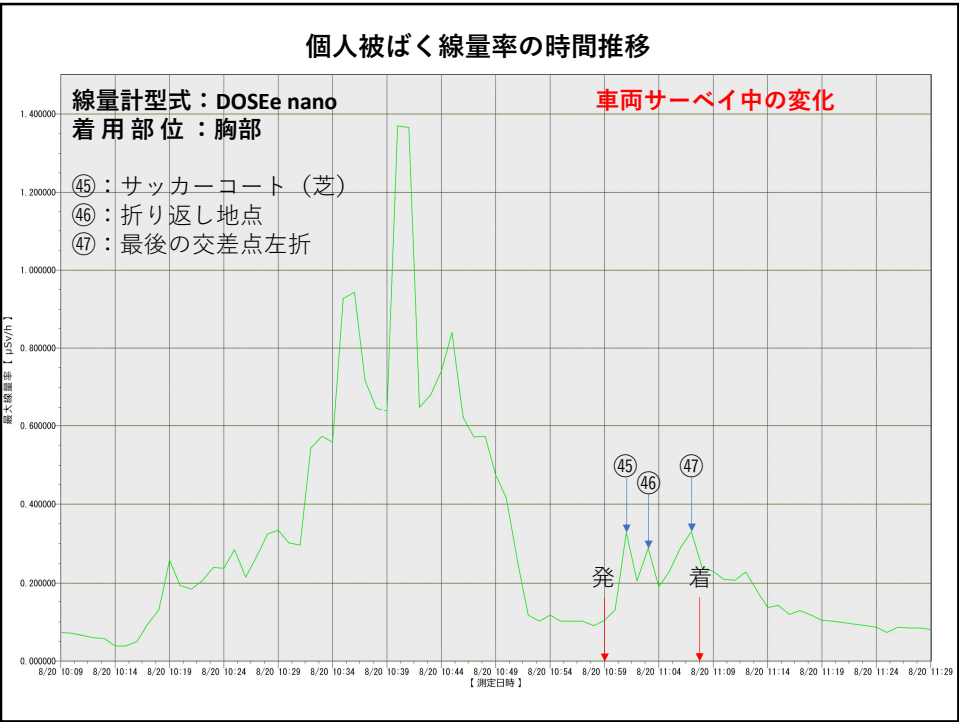
移動中の個人被ばく線量変化

左表を参照

10:25～10:51

個人被ばく線量積算値0.000199 mSv0.199 μSv

90



91



92



95

[illegible]

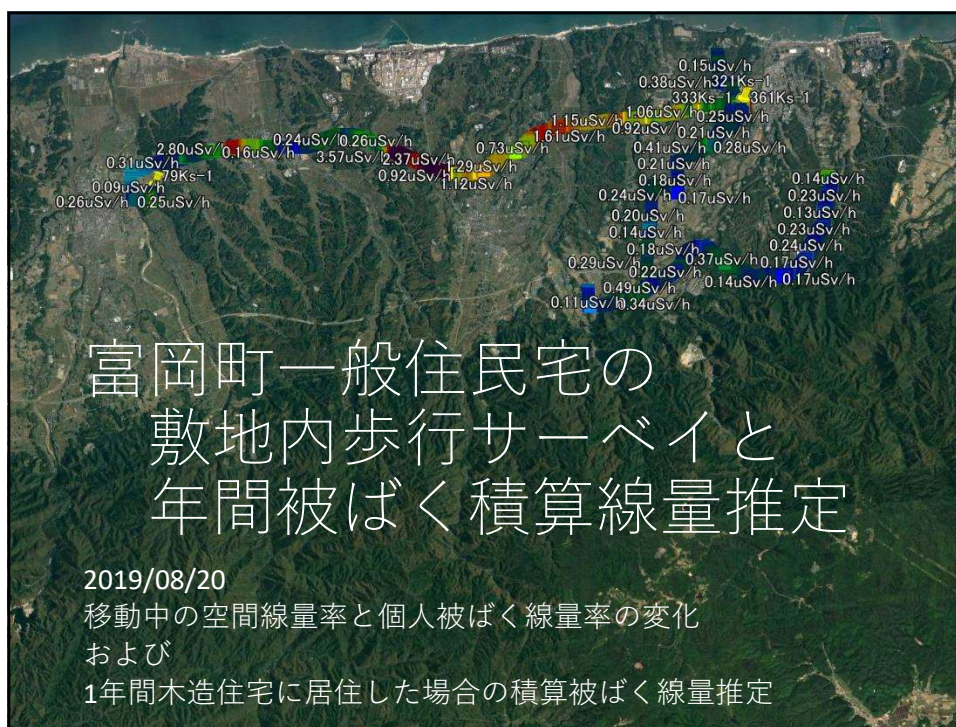
96



97



98



99



100



101

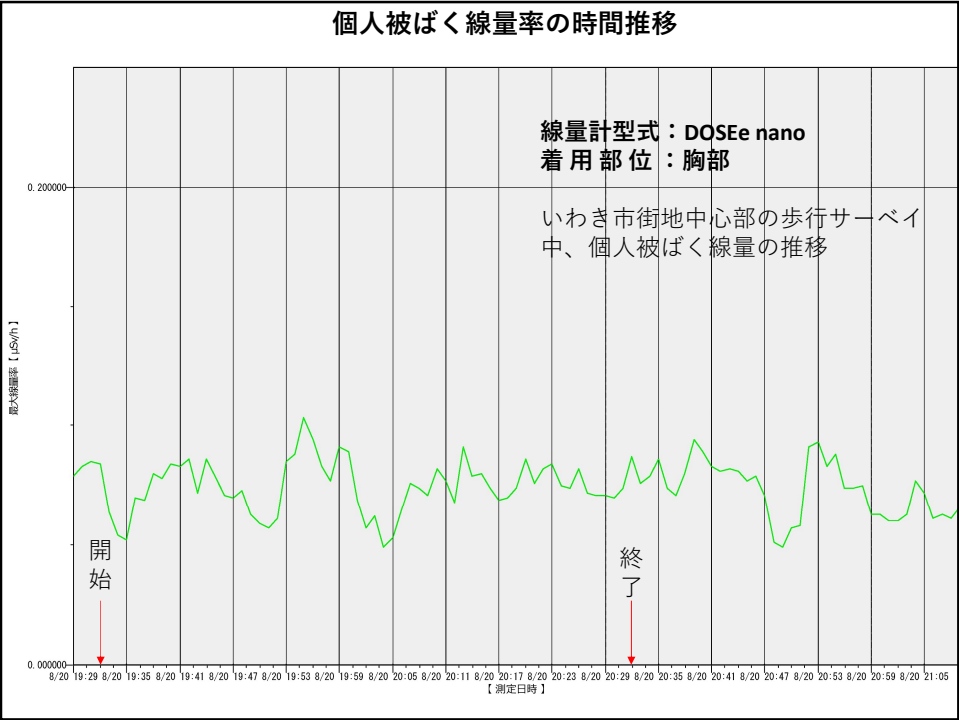


102

歩行サーベイ中のログデータ (1)																						
	A	B	C	D	E	F	G	H	I	J	K	L	M	N	O	P	Q	R	S	T	U	2.70
1	DATE	TIME	LAT	LONGI	HEIGHT	SPEED	ANGLE	CONST	VALUE	UNIT	PDOP	Num of SAT	AVG	AVG MIN	AVG MAX	Num of AVG	TEMP	CPM	CPS	BQM	BATT	2.70
65	2019/8/20	19:40:01						3	0.07	uSv/h		0	0.075	0.07	0.08	6	25.1					2.47
66	2019/8/20	19:40:04						3	0.08	uSv/h		0	0.07667	0.07	0.09	6	25.1					2.47
67	2019/8/20	19:40:06						3	0.07	uSv/h		0	0.076	0.07	0.08	5	25.1					2.47
68	2019/8/20	19:40:09						3	0.07	uSv/h		0	0.06833	0.06	0.08	6	25.1					2.47
69	2019/8/20	19:40:12						3	0.07	uSv/h		0	0.075	0.07	0.08	6	25.1					2.47
70	2019/8/20	19:40:15						3	0.06	uSv/h		0	0.06333	0.06	0.07	3	25.3					2.47
71	2019/8/20	19:40:18						3	0.06	uSv/h		0		0.06	0	0	25.3					2.44
72	2019/8/20	19:40:22						3	0.06	uSv/h		0		0.06	0	0	25.3					2.46
73	2019/8/20	19:40:24						3	0.06	uSv/h		0		0.06	0	0	25.3					2.45
74	2019/8/20	19:40:27						3	0.06	uSv/h		0		0.06	0	0	25.3					2.47
75	2019/8/20	19:40:30						3	0.06	uSv/h		0		0.06	0	0	25.3					2.48
76	2019/8/20	19:40:33	37.0558	140.892	106	5.3	234.75	3	0.06	uSv/h	1.77	5		0.06	0	0	25.3					2.48
77	2019/8/20	19:40:36	37.0558	140.892	103	4.4	234.75	3	0.06	uSv/h	1.77	5		0.06	0	0	25.4					2.48
78	2019/8/20	19:40:39	37.0557	140.892	100	4.3	234.75	3	0.06	uSv/h	1.77	5		0.06	0	0	25.4					2.48
79	2019/8/20	19:40:42	37.0557	140.892	97.8	4.1	234.75	3	0.06	uSv/h	1.71	6		0.06	0	0	25.4					2.48
80	2019/8/20	19:40:45	37.0557	140.892	83.4	4.1	234.75	3	0.06	uSv/h	1.71	6		0.06	0	0	25.4					2.48
81	2019/8/20	19:40:48	37.0557	140.892	70.7	3.6	234.75	3	0.06	uSv/h	1.71	6		0.06	0	0	25.4					2.48
82	2019/8/20	19:40:51	37.0557	140.892	63	4.2	234.75	3	0.06	uSv/h	1.71	6		0.06	0	0	25.5					2.47
83	2019/8/20	19:40:54	37.0557	140.892	57.8	0.1	234.75	3	0.06	uSv/h	1.71	6		0.06	0	0	25.5					2.46
84	2019/8/20	19:40:57	37.0557	140.892	54.3	0.2	234.75	3	0.06	uSv/h	1.69	7		0.06	0	0	25.5					2.47
85	2019/8/20	19:41:00	37.0557	140.892	53.6	0	234.75	3	0.06	uSv/h	1.69	7		0.06	0	0	25.6					2.47
86	2019/8/20	19:41:03	37.0557	140.892	53.4	0	234.75	3	0.06	uSv/h	1.69	7		0.06	0	0	25.6					2.48
87	2019/8/20	19:41:06	37.0557	140.892	53.4	0	234.75	3	0.06	uSv/h	2.88	7		0.06	0	0	25.6					2.47
88	2019/8/20	19:41:09	37.0557	140.892	53.4	0	234.75	3	0.06	uSv/h	2.88	7		0.06	0	0	25.6					2.48
89	2019/8/20	19:41:12	37.0557	140.892	53.4	0	234.75	3	0.06	uSv/h	2.88	7		0.06	0	0	25.6					2.48
90	2019/8/20	19:41:15	37.0557	140.892	53.4	0	234.75	3	0.06	uSv/h	2.88	7		0.06	0	0	25.6					2.47
91	2019/8/20	19:41:18	37.0557	140.892	53.4	0	234.75	3	0.06	uSv/h	2.88	7		0.06	0	0	25.7					2.48
92	2019/8/20	19:41:21	37.0557	140.892	53.4	0	234.75	3	0.06	uSv/h	2.88	7		0.06	0	0	25.7					2.48
93	2019/8/20	19:41:24	37.0557	140.892	53.4	0	234.75	3	0.06	uSv/h	2.88	7		0.06	0	0	25.7					2.48
94	2019/8/20	19:41:27	37.0557	140.892	53.4	0	234.75	3	0.06	uSv/h	2.88	7		0.06	0	0	25.7					2.47
19:32から20:32まで歩行サーベイを実施したが、以下の誤動作が発生した。 ① GPS信号の受信不具合による一部の位置情報欠測 ② 時定数3 s で、3秒間に6回の測定値平均を求めるが、計測のフリーズ ③ 測定単位設定の誤変更 このため、空間線量率測定結果は参考程度のデータとする。																						

103

歩行サーベイ中のログデータ (2)																	
▲	A	B	C	D	E	F	G	H	I	J	K	L	M	N	O	P	Q
1	DATE	TIME	LAT	LONGI	HEIGHT	SPEED	ANGLE	CONST	VALUE	UNIT	PDOP	Num of SAT	AVG	AVG MIN	AVG MAX	Num of AVG	TEMP
772	2019/8/20	20:31:32	37.05564	140.8928	51.3	0.1	169.37	3	26	Ks-1	2.52	4	27	26	28	6	26.5
773	2019/8/20	20:31:35	37.05563	140.8928	51.3	1.4	170.42	3	30	Ks-1	2.52	4	29	26	30	6	26.5
774	2019/8/20	20:31:38	37.0556	140.8928	51.3	1.9	124.83	3	28	Ks-1	3.31	3	27.66667	26	28	6	26.5
775	2019/8/20	20:31:41	37.05558	140.8928	51.3	1.6	155.69	3	25	Ks-1	2.53	4	25.66667	25	26	6	26.4
776	2019/8/20	20:31:44	37.05556	140.8928	51.3	1.6	86.2	3	25	Ks-1	3.31	3	26.16667	25	28	6	26.5
777	2019/8/20	20:31:47	37.05555	140.8928	51.4	2.2	85.03	3	23	Ks-1	3.31	3	23.5	22	25	6	26.5
778	2019/8/20	20:31:50	37.05553	140.8928	51.4	1.3	159.95	3	27	Ks-1	3.31	3	24.83333	23	27	6	26.5
779	2019/8/20	20:31:53	37.0555	140.8928	51.5	1.5	168.41	3	28	Ks-1	3.31	3	27.5	26	28	6	26.4
780	2019/8/20	20:31:56	37.05547	140.8929	51.6	3.3	124.82	3	26	Ks-1	3.31	3	26	25	27	6	26.4
781	2019/8/20	20:31:59	37.05545	140.8929	51.7	1.7	135.75	3	24	Ks-1	3.31	3	25.6	24	26	5	26.5
782	2019/8/20	20:32:02	37.05543	140.8929	51.8	2.1	131.69	3	28	Ks-1	3.31	3	27.28572	24	29	7	26.4
783	2019/8/20	20:32:05	37.05541	140.8929	51.8	3.9	122.31	3	28	Ks-1	3.31	3	27.33333	26	28	6	26.5
784	2019/8/20	20:32:08	37.05539	140.893	51.9	2.9	137.74	3	28	Ks-1	3.31	3	28.16667	27	29	6	26.4
785	2019/8/20	20:32:11	37.05539	140.893	51.9	2.4	113.4	3	26	Ks-1	3.31	3	26.5	26	27	6	26.4
786	2019/8/20	20:32:14	37.05539	140.893	52	3.1	91.22	3	29	Ks-1	3.31	3	27.83333	26	30	6	26.4
787	2019/8/20	20:32:17	37.05542	140.893	52	1.7	76.79	3	26	Ks-1	2.51	4	28	26	29	6	26.4
788	2019/8/20	20:32:20	37.05545	140.8929	52	0.4	76.79	3	26	Ks-1	2.51	4	24.83333	24	26	6	26.5
789	2019/8/20	20:32:23	37.05545	140.8929	51.4	1.1	76.79	3	28	Ks-1	2.51	4	27.33333	26	28	6	26.4
790	2019/8/20	20:32:26	37.05547	140.8929	51.5	0.8	77.03	3	26	Ks-1	2.51	4	26.5	25	27	6	26.5
791	2019/8/20	20:32:29	37.05548	140.8929	51.5	0.4	77.03	3	28	Ks-1	2.51	4	26.83333	26	28	6	26.5
792	2019/8/20	20:32:32	37.05549	140.8929	51.4	0.3	77.03	3	25	Ks-1	2.51	4	28	25	30	6	26.4
793	2019/8/20	20:32:35	37.05549	140.8929	51.4	1.2	85.09	3	25	Ks-1	2.51	4	25	23	27	6	26.4
794	2019/8/20	20:32:38	37.05552	140.8929	51.4	2.2	21.86	3	28	Ks-1	2.51	4	26.66667	24	29	6	26.4
795	2019/8/20	20:32:41	37.05554	140.8929	51.3	2.3	340.65	3	27	Ks-1	3.38	4	29	27	30	6	26.4
796	2019/8/20	20:32:44	37.05554	140.8928	51.3	1.1	290.85	3	26	Ks-1	2.51	4	27.16667	26	28	6	26.4
797	2019/8/20	20:32:47	37.05555	140.8928	51.2	1.4	292.9	3	27	Ks-1	2.51	4	27.16667	26	28	6	26.4
798	2019/8/20	20:32:50	37.05555	140.8928	51.2	1.1	301.18	3	29	Ks-1	2.51	4	27.16667	26	29	6	26.4
799	2019/8/20	20:32:53	37.05556	140.8927	51.2	1.6	308.5	3	26	Ks-1	2.51	4	27.66667	26	29	6	26.4
800	2019/8/20	20:32:56	37.05556	140.8927	51.2	0.3	287.87	3	28	Ks-1	2.51	4	25.66667	24	28	6	26.4
801																	



105

- 移動中の個人被ばく線量変化

左表を参照

DOSEe nano による測定

胸部着用

19:32～20:32

個人被ばく線量積算値

0.000061 mSv

0.061 μSv

年月日時刻	被ばく線量(mSv)
2019.08.20 19:32	0.000001
2019.08.20 19:33	0
2019.08.20 19:34	0.000001
2019.08.20 19:35	0.000001
2019.08.20 19:36	0.000001
2019.08.20 19:37	0.000001
2019.08.20 19:38	0.000001
2019.08.20 19:39	0.000001
2019.08.20 19:40	0.000002
2019.08.20 19:41	0.000001
2019.08.20 19:42	0.000001
2019.08.20 19:43	0.000001
2019.08.20 19:44	0.000001
2019.08.20 19:45	0.000001
2019.08.20 19:46	0.000001
2019.08.20 19:47	0.000001
2019.08.20 19:48	0
2019.08.20 19:49	0.000001
2019.08.20 19:50	0.000001
2019.08.20 19:51	0.000001
2019.08.20 19:52	0.000001
2019.08.20 19:53	0.000002
2019.08.20 19:54	0.000001
2019.08.20 19:55	0.000002
2019.08.20 19:56	0.000001
2019.08.20 19:57	0
2019.08.20 19:58	0.000001
2019.08.20 19:59	0.000002
2019.08.20 20:00	0.000001
2019.08.20 20:01	0
2019.08.20 20:02	0.000001
2019.08.20 20:03	0.000001
2019.08.20 20:04	0
2019.08.20 20:05	0.000001
2019.08.20 20:06	0.000001
2019.08.20 20:07	0.000002
2019.08.20 20:08	0
2019.08.20 20:09	0.000001
2019.08.20 20:10	0.000002
2019.08.20 20:11	0
2019.08.20 20:12	0.000001
2019.08.20 20:13	0.000002
2019.08.20 20:14	0.000001
2019.08.20 20:15	0.000001
2019.08.20 20:16	0.000001
2019.08.20 20:17	0
2019.08.20 20:18	0.000001
2019.08.20 20:19	0.000002
2019.08.20 20:20	0.000001
2019.08.20 20:21	0.000001
2019.08.20 20:22	0.000001
2019.08.20 20:23	0.000001
2019.08.20 20:24	0.000001
2019.08.20 20:25	0.000001
2019.08.20 20:26	0.000001
2019.08.20 20:27	0.000001
2019.08.20 20:28	0.000001
2019.08.20 20:29	0.000001
2019.08.20 20:30	0.000001
2019.08.20 20:31	0.000001
2019.08.20 20:32	0.000001

106

